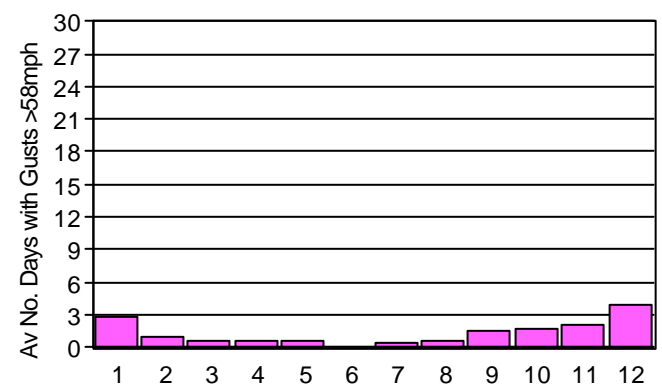
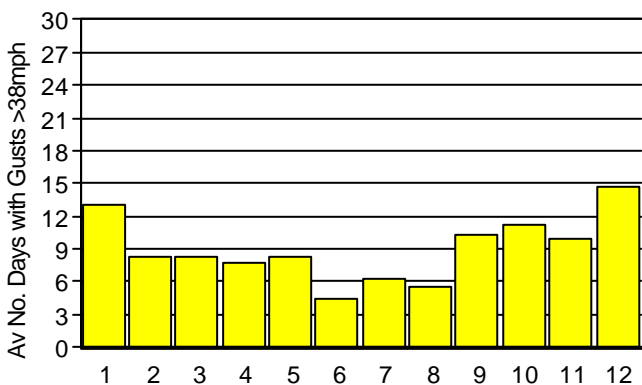
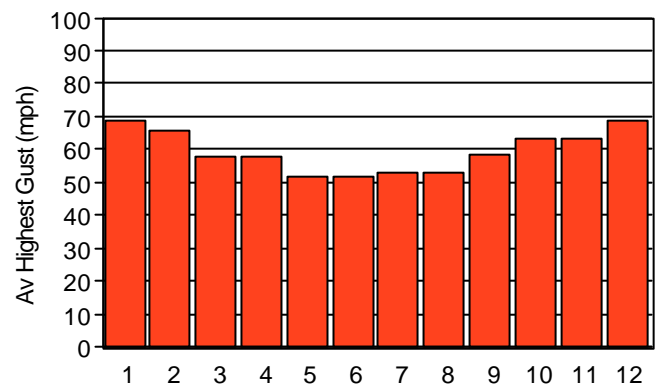
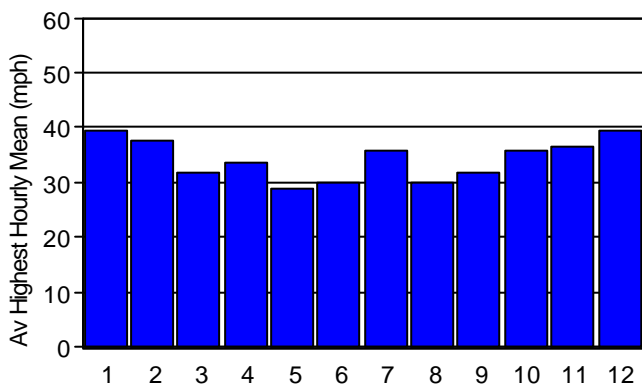




Bidston Merseyside Period of Records **1929-1959** Alt ASL **60m** Grid E **3287** GridN3899
Height of Anemo Above Ground **11.9 m** Effective Height of Anemo **11.9**

Month	HOURLY MEAN (mph)		MAX GUST (mph)		AV NUMBER OF DAYS WITH MAX GUST				AV NUMBER OF HOURS WITH MAX GUST	
	Av Highest	Highest	Av Highest	Highest	>38mph	>46mph	>58mph	>69mph	>38mph	>54mph
January	40	53	69	100	13.1	7.0	2.9	1.0	105.4	17.7
February	38	50	66	85	8.4	4.5	1.0	0.3	55.2	5.9
March	32	49	58	76	8.3	3.7	0.7	0.1	49.3	3.0
April	34	53	58	87	7.7	3.1	0.6	0.2	59.1	3.9
May	29	47	52	72	8.3	2.9	0.6	0.1	40.4	3.0
June	30	42	52	70	4.4	1.7	0.0	0.0	31.5	0.9
July	36	43	53	73	6.3	2.4	0.4	0.2	43.4	3.0
August	30	49	53	76	5.5	2.6	0.6	0.1	37.4	4.9
September	32	49	59	77	10.3	5.3	1.6	0.7	88.7	13.8
October	36	63	64	95	11.2	5.4	1.7	0.5	76.9	10.8
November	37	52	64	97	10.0	5.2	2.2	0.8	72.9	14.8
December	40	56	69	93	14.7	9.6	4.0	1.5	125.1	33.5
Max / Totals	40	63	69	100	108.2	53.4	16.3	5.5	785.3	115.2



Wind Speeds Likely to be Exceeded Every... (Return Periods)

Max Hourly Mean
 Mean Annual Max **47mph**
 Once in 10 Years **55mph**
 Once in 20 Years **59mph**
 Once in 50 Years **63mph**
 Once in 100 Years **67mph**

Max Gust
 Mean Annual Max **81mph**
 Once in 10 Years **93mph**
 Once in 20 Years **98mph**
 Once in 50 Years **105mph**
 Once in 100 Years **109mph**

Values have been corrected from the height of 11.9m to 10m using a power law with an index of 0.17 for means & 0.085 for gusts