

**DOWNTIME SUMMARY FOR
SAMPLE**

March 2007
PREPARED FOR
Client Name

ISSUED BY
Stephen K Roberts (BSc., FRMetS)
AT: 4:12 PM
ON: 13/06/2007

EXPLANATORY NOTES

GENERAL

This report is designed to substantiate and quantify claims for extension of time brought about by weather which prevents various types of work on site from proceeding. All times quoted are GMT
Actual hour by hour readings for each day are given as tabulations and graphs at the back of the report.
The earlier pages provides an hourly analysis of particular working limits for:

- (i) 10 minute mean wind speed for each hour (yellow header)
- (ii) maximum wind gust for each hour (red header)
- (iii) air temperature for each hour (pink header)
- (iv) humidity, sunshine and precipitation (blue header)

ACTUALS

For each element, for each limit, actual data is given for each working day. Values for the month as a whole are given at the base of the report and compared to an average based upon the same month in previous years. This gives a 'deviation from average' or 'anomaly'.

ANOMALIES

The Average Daily Anomaly describes how much more (+ve) or less (-ve) of each weather element was experienced for each day 'this year' compared to normal. The Total Anomaly is the product of the daily anomaly and the number of working days, and indicates net surplus (+ve anomalies) or deficit (-ve anomalies) in (inclement) weather. For critical limits, high positive total anomalies give an idea of how many hours might legitimately be claimed for as extension of time.

PERCENTILES

The final row, Degree of Extremity (Percentile) ranks this years weather with that of previous years. The value gives an idea of what proportion of previous years experienced conditions 'worse' than that of the current year. A value of 10% implies that this years weather was very inclement, and that 'worse' conditions occurred in only 1 in 10 of previous years. 0% indicates that this years value was unprecedented and the weather the worst 'ever'.

If you require further information, or need assistance in interpreting the content of this report, please contact the author.

WeatherNet Ltd
Kingsland House
21 Hinton Road
Bournemouth
Dorset BH12DE
Tel: 01202-296396
Fax: 01202-314064
www.weather.net.co.uk

**Maximum Wind Gusts for the Working Day 0700-1900 for SAMPLE
March 2007**

4:08 PM

13/06/2007

No. Hours in Working Day

Date	% of All Values Sampled	NO. OF HOURS IN THE WORKING DAY MAX GUST @10m AGL >=						MAX GUST @10m AGL		
		20 mph	25 mph	30 mph	35 mph	40 mph	45 mph	Average (mph)	Standard Deviation (mph)	Highest (mph)
Thu 01 Mar 2007	100%	9	5	0	0	0	0	22.6	4.0	29
Fri 02 Mar 2007	100%	0	0	0	0	0	0	12.3	5.2	19
Sat 03 Mar 2007	100%	1	0	0	0	0	0	13.8	4.3	20
Sun 04 Mar 2007	100%	7	0	0	0	0	0	18.9	3.0	23
Mon 05 Mar 2007	100%	10	7	2	0	0	0	24.9	4.2	31
Tue 06 Mar 2007	100%	1	0	0	0	0	0	17.1	2.8	24
Wed 07 Mar 2007	100%	0	0	0	0	0	0	9.4	1.8	13
Thu 08 Mar 2007	100%	0	0	0	0	0	0	7.5	3.6	16
Fri 09 Mar 2007	100%	2	0	0	0	0	0	15.9	3.0	21
Sat 10 Mar 2007	100%	3	0	0	0	0	0	17.6	3.4	24
Sun 11 Mar 2007	100%	4	0	0	0	0	0	16.6	3.6	20
Mon 12 Mar 2007	100%	0	0	0	0	0	0	9.5	2.6	14
Tue 13 Mar 2007	100%	0	0	0	0	0	0	8.6	3.3	13
Wed 14 Mar 2007	100%	0	0	0	0	0	0	5.9	2.4	9
Thu 15 Mar 2007	100%	0	0	0	0	0	0	10.7	3.5	16
Fri 16 Mar 2007	100%	1	0	0	0	0	0	12.3	6.3	23
Sat 17 Mar 2007	100%	7	3	0	0	0	0	20.3	5.8	29
Sun 18 Mar 2007	100%	12	9	4	1	0	0	27.6	3.9	37
Mon 19 Mar 2007	100%	1	1	0	0	0	0	16.0	3.6	26
Tue 20 Mar 2007	100%	3	0	0	0	0	0	19.3	2.1	23
Wed 21 Mar 2007	100%	0	0	0	0	0	0	12.4	2.3	16
Thu 22 Mar 2007	100%	0	0	0	0	0	0	6.0	1.6	9
Fri 23 Mar 2007	100%	0	0	0	0	0	0	15.1	2.3	19
Sat 24 Mar 2007	100%	0	0	0	0	0	0	15.0	2.6	19
Sun 25 Mar 2007	100%	1	0	0	0	0	0	15.1	3.1	20
Mon 26 Mar 2007	100%	0	0	0	0	0	0	12.0	4.2	19
Tue 27 Mar 2007	100%	0	0	0	0	0	0	6.5	3.6	13
Wed 28 Mar 2007	100%	0	0	0	0	0	0	4.7	3.0	11
Thu 29 Mar 2007	100%	0	0	0	0	0	0	10.5	3.9	19
Fri 30 Mar 2007	100%	0	0	0	0	0	0	10.6	1.5	13
Sat 31 Mar 2007	100%	8	3	0	0	0	0	20.3	5.0	27
Averages Mar 2007	<input type="text" value="100%"/>	<input type="text" value="2.3"/>	<input type="text" value="0.9"/>	<input type="text" value="0.2"/>	<input type="text" value="0.0"/>	<input type="text" value="0.0"/>	<input type="text" value="0.0"/>	<input type="text" value="14.0"/>	<input type="text" value="6.7"/>	<input type="text" value="37"/>
Averages 1987-2006		<input type="text" value="5.0"/>	<input type="text" value="2.9"/>	<input type="text" value="1.6"/>	<input type="text" value="0.6"/>	<input type="text" value="0.3"/>	<input type="text" value="0.1"/>	<input type="text" value="19.2"/>		
Av Daily Anomaly (hrs per day)		<input type="text" value="-2.7"/>	<input type="text" value="-2.0"/>	<input type="text" value="-1.4"/>	<input type="text" value="-0.6"/>	<input type="text" value="-0.3"/>	<input type="text" value="-0.1"/>			
Total Anomaly for 31 Days (hrs)		<input type="text" value="-85.0"/>	<input type="text" value="-61.9"/>	<input type="text" value="-43.6"/>	<input type="text" value="-17.6"/>	<input type="text" value="-9.3"/>	<input type="text" value="-3.1"/>			
Degree of Extremity (Percentile)	<input type="text" value="100%"/>	<input type="text" value="100%"/>	<input type="text" value="100%"/>	<input type="text" value="100%"/>	<input type="text" value="100%"/>	<input type="text" value="100%"/>	<input type="text" value="100%"/>	<input type="text" value="100%"/>		

Mean Wind Speeds for the Working Day 0700-1900 for SAMPLE March 2007

4:07 PM
13/06/2007

No. Hours in Working Day

Date	% of All Values Sampled	NO. OF HOURS IN THE WORKING DAY 10 MINUTE MEAN WIND @10m AGL >=						10 MINUTE MEAN WIND @10m AGL		
		10 mph	15 mph	20 mph	25 mph	30 mph	35 mph	Average (mph)	Standard Deviation (mph)	Highest (mph)
Thu 01 Mar 2007	100%	12	8	1	0	0	0	15.8	2.8	20
Fri 02 Mar 2007	100%	7	0	0	0	0	0	8.6	3.7	13
Sat 03 Mar 2007	100%	5	0	0	0	0	0	9.6	3.0	14
Sun 04 Mar 2007	100%	11	3	0	0	0	0	13.3	2.0	16
Mon 05 Mar 2007	100%	12	10	2	0	0	0	17.5	3.0	22
Tue 06 Mar 2007	100%	11	1	0	0	0	0	11.9	2.0	17
Wed 07 Mar 2007	100%	0	0	0	0	0	0	6.5	1.3	9
Thu 08 Mar 2007	100%	1	0	0	0	0	0	5.3	2.5	11
Fri 09 Mar 2007	100%	8	1	0	0	0	0	11.2	2.1	15
Sat 10 Mar 2007	100%	11	2	0	0	0	0	12.3	2.4	17
Sun 11 Mar 2007	100%	9	0	0	0	0	0	11.5	2.5	14
Mon 12 Mar 2007	100%	1	0	0	0	0	0	6.6	1.8	10
Tue 13 Mar 2007	100%	0	0	0	0	0	0	6.0	2.2	9
Wed 14 Mar 2007	100%	0	0	0	0	0	0	4.1	1.6	6
Thu 15 Mar 2007	100%	4	0	0	0	0	0	7.5	2.4	11
Fri 16 Mar 2007	100%	5	1	0	0	0	0	8.7	4.3	16
Sat 17 Mar 2007	100%	9	6	2	0	0	0	14.2	4.0	20
Sun 18 Mar 2007	100%	12	12	5	1	0	0	19.3	2.7	26
Mon 19 Mar 2007	100%	7	1	0	0	0	0	11.1	2.5	18
Tue 20 Mar 2007	100%	12	3	0	0	0	0	13.3	1.5	16
Wed 21 Mar 2007	100%	5	0	0	0	0	0	8.8	1.6	11
Thu 22 Mar 2007	100%	0	0	0	0	0	0	4.3	1.0	6
Fri 23 Mar 2007	100%	9	0	0	0	0	0	10.5	1.6	13
Sat 24 Mar 2007	100%	8	0	0	0	0	0	10.5	1.8	13
Sun 25 Mar 2007	100%	9	0	0	0	0	0	10.5	2.1	14
Mon 26 Mar 2007	100%	5	0	0	0	0	0	8.3	2.9	13
Tue 27 Mar 2007	100%	0	0	0	0	0	0	4.6	2.4	9
Wed 28 Mar 2007	100%	0	0	0	0	0	0	3.4	2.1	8
Thu 29 Mar 2007	100%	2	0	0	0	0	0	7.3	2.6	13
Fri 30 Mar 2007	100%	0	0	0	0	0	0	7.5	1.0	9
Sat 31 Mar 2007	100%	9	6	0	0	0	0	14.2	3.5	19
Averages Mar 2007	<input type="text" value="100%"/>	<input type="text" value="5.9"/>	<input type="text" value="1.7"/>	<input type="text" value="0.3"/>	<input type="text" value="0.0"/>	<input type="text" value="0.0"/>	<input type="text" value="0.0"/>	<input type="text" value="9.8"/>	<input type="text" value="4.6"/>	<input type="text" value="26"/>
Averages 1987-2006		<input type="text" value="6.4"/>	<input type="text" value="2.8"/>	<input type="text" value="0.6"/>	<input type="text" value="0.1"/>	<input type="text" value="0.0"/>	<input type="text" value="0.0"/>	<input type="text" value="10.6"/>		
Av Daily Anomaly (hrs per day)		<input type="text" value="-0.5"/>	<input type="text" value="-1.1"/>	<input type="text" value="-0.3"/>	<input type="text" value="-0.1"/>	<input type="text" value="0.0"/>	<input type="text" value="0.0"/>			
Total Anomaly for 31 Days (hrs)		<input type="text" value="-14.4"/>	<input type="text" value="-32.8"/>	<input type="text" value="-8.6"/>	<input type="text" value="-2.1"/>	<input type="text" value="0.0"/>	<input type="text" value="0.0"/>			
Degree of Extremity (Percentile)		<input type="text" value="50%"/>	<input type="text" value="90%"/>	<input type="text" value="75%"/>	<input type="text" value="100%"/>	<input type="text" value="100%"/>	<input type="text" value="100%"/>	<input type="text" value="85%"/>		

Air Temperatures for the Working Day 0700-1900 for SAMPLE March 2007

4:10 PM
13/06/2007

No. Hours in Working Day

Date	% of All Values Sampled	NO. OF HOURS IN THE WORKING DAY AIR TEMPERATURE <						AIR TEMPERATURE (°C)			
		0 °C	1 °C	2 °C	4 °C	8 °C	15 °C	Average	Standard Deviation	Highest	Lowest
Thu 01 Mar 2007	100%	0	0	0	0	3	12	8.4	1.6	10	5
Fri 02 Mar 2007	100%	0	0	0	2	3	12	8.1	3.0	11	2
Sat 03 Mar 2007	100%	0	0	0	0	3	12	9.3	2.5	12	5
Sun 04 Mar 2007	100%	0	0	0	0	2	12	9.4	1.5	12	7
Mon 05 Mar 2007	100%	0	0	0	0	3	12	9.5	1.8	12	6
Tue 06 Mar 2007	100%	0	0	0	0	0	12	12.0	0.9	14	11
Wed 07 Mar 2007	100%	0	0	0	0	0	12	10.9	1.0	12	10
Thu 08 Mar 2007	100%	0	0	0	0	3	12	10.3	3.1	13	4
Fri 09 Mar 2007	100%	0	0	0	0	0	12	10.6	1.1	12	9
Sat 10 Mar 2007	100%	0	0	0	0	3	12	10.7	2.9	14	5
Sun 11 Mar 2007	100%	0	0	0	0	1	7	12.8	3.1	16	7
Mon 12 Mar 2007	100%	0	0	0	0	1	5	13.4	3.0	16	7
Tue 13 Mar 2007	100%	0	0	0	0	2	12	11.2	2.4	14	7
Wed 14 Mar 2007	100%	0	0	0	0	2	11	10.8	3.3	15	4
Thu 15 Mar 2007	100%	0	0	0	0	2	12	10.0	2.3	12	5
Fri 16 Mar 2007	100%	0	0	0	0	1	12	10.7	1.9	13	7
Sat 17 Mar 2007	100%	0	0	0	0	0	11	12.7	1.4	15	10
Sun 18 Mar 2007	100%	0	0	0	0	5	12	7.6	1.2	9	5
Mon 19 Mar 2007	100%	0	0	0	2	11	12	5.4	1.6	8	3
Tue 20 Mar 2007	100%	0	0	0	4	12	12	4.2	1.3	6	2
Wed 21 Mar 2007	100%	0	1	1	3	9	12	5.7	2.5	8	0
Thu 22 Mar 2007	100%	0	0	2	4	12	12	4.5	2.1	7	1
Fri 23 Mar 2007	100%	0	0	0	0	8	12	7.2	0.7	8	6
Sat 24 Mar 2007	100%	0	0	0	0	11	12	6.8	0.7	8	5
Sun 25 Mar 2007	100%	0	0	0	0	2	12	10.3	1.8	12	7
Mon 26 Mar 2007	100%	0	0	0	0	2	8	11.9	3.6	16	4
Tue 27 Mar 2007	100%	0	0	0	0	1	6	13.4	3.5	18	6
Wed 28 Mar 2007	100%	0	0	0	0	2	6	12.3	3.9	17	5
Thu 29 Mar 2007	100%	0	0	0	0	7	12	7.7	0.8	9	7
Fri 30 Mar 2007	100%	0	0	0	0	4	12	7.8	0.9	9	6
Sat 31 Mar 2007	100%	0	0	0	0	0	12	12.2	2.3	14	8
Averages Mar 2007	<input type="text" value="100%"/>	<input type="text" value="0.0"/>	<input type="text" value="0.0"/>	<input type="text" value="0.1"/>	<input type="text" value="0.5"/>	<input type="text" value="3.7"/>	<input type="text" value="11.0"/>	<input type="text" value="9.6"/>	<input type="text" value="3.4"/>	<input type="text" value="18"/>	<input type="text" value="0"/>
Averages 1987-2006		<input type="text" value="0.1"/>	<input type="text" value="0.2"/>	<input type="text" value="0.3"/>	<input type="text" value="1.1"/>	<input type="text" value="4.4"/>	<input type="text" value="11.5"/>	<input type="text" value="9.1"/>			
Av Daily Anomaly (hrs per day)		<input type="text" value="-0.1"/>	<input type="text" value="-0.2"/>	<input type="text" value="-0.2"/>	<input type="text" value="-0.6"/>	<input type="text" value="-0.7"/>	<input type="text" value="-0.5"/>				
Total Anomaly for 31 Days (hrs)		<input type="text" value="-3.1"/>	<input type="text" value="-5.2"/>	<input type="text" value="-6.3"/>	<input type="text" value="-19.1"/>	<input type="text" value="-21.4"/>	<input type="text" value="-14.5"/>				
Degree of Extremity (Percentile)	<input type="text" value="100%"/>	<input type="text" value="100%"/>	<input type="text" value="75%"/>	<input type="text" value="50%"/>	<input type="text" value="50%"/>	<input type="text" value="80%"/>	<input type="text" value="50%"/>				

Humidity, Sun & Precipitation for the Working Day 0700-1900 for SAMPLE March 2007

4:12 PM
13/06/2007

No. Hours in Working Day

Date	No. Hours in Working Day Humidity >= 90%	No. Hours in Working Day Rainfall >= 0.2mm	Sunshine for the Working Day (Hours)	Rainfall for the Working Day (mm)	Rainfall 0000-2400 (mm)	Day with Snow Falling 0000-2400	Depth of Lying Snow @0900 (cm)
Thu 01 Mar 2007	0	0		0.0	0.0		
Fri 02 Mar 2007	0	3		2.9	6.5		
Sat 03 Mar 2007	0	1		0.3	0.5		
Sun 04 Mar 2007	5	9		12.4	13.1		
Mon 05 Mar 2007	0	0		0.1	2.6		
Tue 06 Mar 2007	0	0		0.0	7.7		
Wed 07 Mar 2007	1	0		0.0	0.4		
Thu 08 Mar 2007	0	0		0.0	1.2		
Fri 09 Mar 2007	1	0		0.0	0.5		
Sat 10 Mar 2007	0	0		0.0	0.0		
Sun 11 Mar 2007	0	0		0.0	0.0		
Mon 12 Mar 2007	0	0		0.0	0.0		
Tue 13 Mar 2007	0	0		0.0	0.0		
Wed 14 Mar 2007	0	0		0.0	0.0		
Thu 15 Mar 2007	0	0		0.0	0.0		
Fri 16 Mar 2007	0	0		0.0	0.0		
Sat 17 Mar 2007	0	0		0.0	0.0		
Sun 18 Mar 2007	0	2		2.3	2.4		
Mon 19 Mar 2007	0	2		1.5	1.8		
Tue 20 Mar 2007	0	0		0.1	0.2		
Wed 21 Mar 2007	0	0		0.0	0.0		
Thu 22 Mar 2007	0	3		0.9	1.6		
Fri 23 Mar 2007	0	0		0.1	0.5		
Sat 24 Mar 2007	3	0		0.0	0.0		
Sun 25 Mar 2007	1	0		0.0	0.0		
Mon 26 Mar 2007	0	0		0.0	0.0		
Tue 27 Mar 2007	0	0		0.0	0.0		
Wed 28 Mar 2007	0	0		0.0	0.0		
Thu 29 Mar 2007	0	3		0.8	0.8		
Fri 30 Mar 2007	4	6		2.5	3.1		
Sat 31 Mar 2007	0	0		0.0	0.0		
Averages Mar 2007	<input style="width: 50px;" type="text" value="0.5"/>	<input style="width: 50px;" type="text" value="0.9"/>	<input style="width: 50px;" type="text" value=""/>	<input style="width: 50px;" type="text" value="0.8"/>	<input style="width: 50px;" type="text" value="1.4"/>		
Averages 1987-2006	<input style="width: 50px;" type="text" value="1.0"/>	<input style="width: 50px;" type="text" value="1.0"/>	<input style="width: 50px;" type="text" value=""/>	<input style="width: 50px;" type="text" value="0.7"/>	<input style="width: 50px;" type="text" value="1.3"/>		
Av Daily Anomaly	<input style="width: 50px;" type="text" value="-0.5"/>	<input style="width: 50px;" type="text" value="-0.1"/>	<input style="width: 50px;" type="text" value="0.0"/>	<input style="width: 50px;" type="text" value="0.1"/>	<input style="width: 50px;" type="text" value="0.1"/>		
Total Anomaly for 31 Days	<input style="width: 50px;" type="text" value="-16.0"/>	<input style="width: 50px;" type="text" value="-2.0"/>	<input style="width: 50px;" type="text" value="0.0"/>	<input style="width: 50px;" type="text" value="2.2"/>	<input style="width: 50px;" type="text" value="2.6"/>		
Degree of Extremity (Percentile)	<input style="width: 50px;" type="text" value="90%"/>	<input style="width: 50px;" type="text" value="65%"/>	<input style="width: 50px;" type="text" value=""/>	<input style="width: 50px;" type="text" value="45%"/>	<input style="width: 50px;" type="text" value="50%"/>		

Weather for the Working Day at SAMPLE

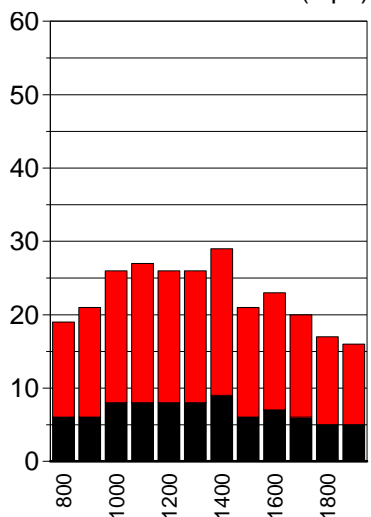
Thursday 01 March 2007

4:13 PM
13/06/2007

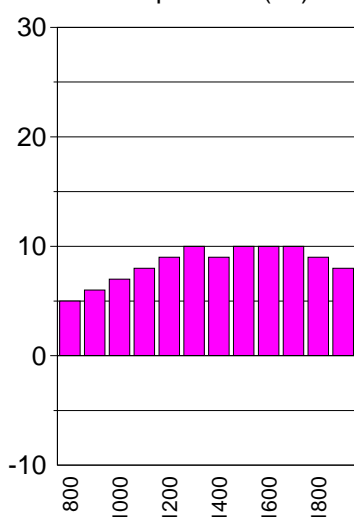
Hour Ending GMT	Wind Dirn	10 Minute Mean Wind @10m (mph)	Max Gust @10m (mph)	Air Temp (°C)	Relative Humidity	Rain (mm)	Sun (hours)	State of Ground	Significant Weather
0800	225°	13.0	19.0	5.0	70%	0.0		N/A	N/A
0900	225°	15.0	21.0	6.0	70%	0.0		N/A	N/A
1000	225°	18.0	26.0	7.0	69%	0.0		N/A	N/A
1100	225°	19.0	27.0	8.0	63%	0.0		N/A	N/A
1200	270°	18.0	26.0	9.0	58%	0.0		N/A	N/A
1300	270°	18.0	26.0	10.0	52%	0.0		N/A	N/A
1400	270°	20.0	29.0	9.0	49%	0.0		N/A	N/A
1500	270°	15.0	21.0	10.0	49%	0.0		N/A	N/A
1600	270°	16.0	23.0	10.0	47%	0.0		N/A	N/A
1700	270°	14.0	20.0	10.0	50%	0.0		N/A	N/A
1800	270°	12.0	17.0	9.0	48%	0.0		N/A	N/A
1900	270°	11.0	16.0	8.0	50%	0.0		N/A	N/A

Highest	<input type="text" value="20.0"/>	<input type="text" value="29.0"/>	<input type="text" value="10.0"/>	<input type="text" value="0.0"/>	<input type="text" value=""/>
Lowest			<input type="text" value="5.0"/>		
Totals				<input type="text" value="0.0"/>	<input type="text" value=""/>

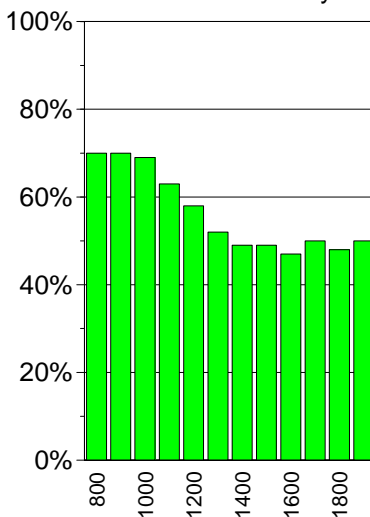
Mean Wind & Max Gust (mph)



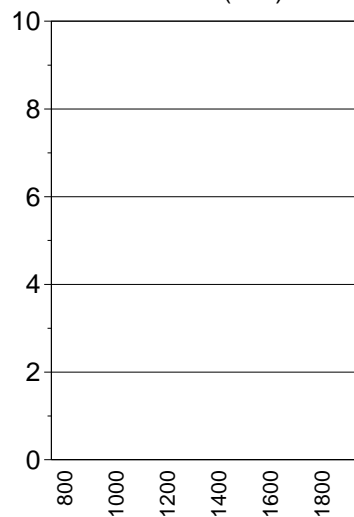
Temperature (°C)



Relative Humidity



Rainfall (mm)



Weather for the Working Day at SAMPLE

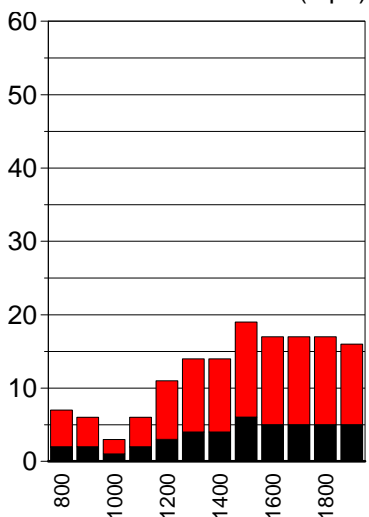
Friday 02 March 2007

4:13 PM
13/06/2007

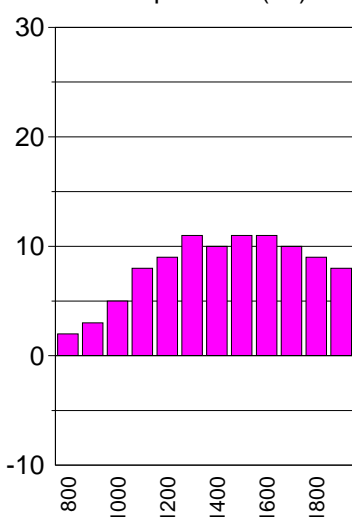
Hour Ending GMT	Wind Dirn	10 Minute Mean Wind @10m (mph)	Max Gust @10m (mph)	Air Temp (°C)	Relative Humidity	Rain (mm)	Sun (hours)	State of Ground	Significant Weather
0800	225°	5.0	7.0	2.0	82%	0.0		N/A	N/A
0900	225°	4.0	6.0	3.0	81%	0.0		N/A	N/A
1000	225°	2.0	3.0	5.0	78%	0.0		N/A	N/A
1100	225°	4.0	6.0	8.0	72%	0.0		N/A	N/A
1200	180°	8.0	11.0	9.0	62%	0.0		N/A	N/A
1300	180°	10.0	14.0	11.0	51%	0.0		N/A	N/A
1400	180°	10.0	14.0	10.0	49%	0.0		N/A	N/A
1500	180°	13.0	19.0	11.0	49%	0.0		N/A	N/A
1600	180°	12.0	17.0	11.0	48%	0.0		N/A	N/A
1700	135°	12.0	17.0	10.0	55%	1.6		N/A	N/A
1800	135°	12.0	17.0	9.0	64%	0.9		N/A	N/A
1900	135°	11.0	16.0	8.0	71%	0.4		N/A	N/A

Highest	13.0	19.0	11.0		
Lowest			2.0		
Totals				2.9	

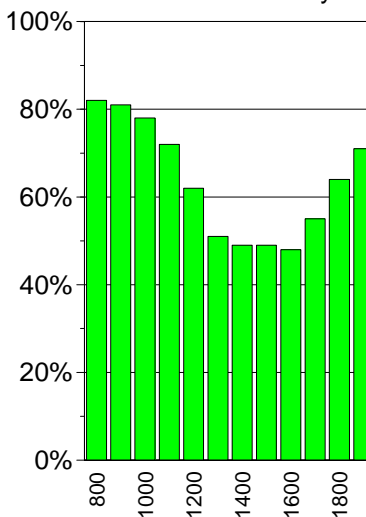
Mean Wind & Max Gust (mph)



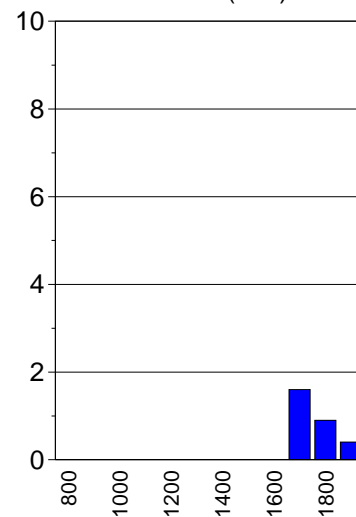
Temperature (°C)



Relative Humidity



Rainfall (mm)



Weather for the Working Day at SAMPLE

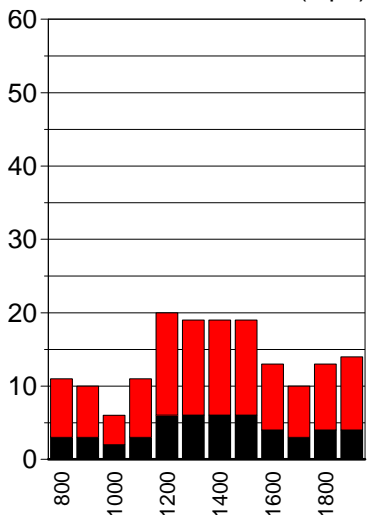
Saturday 03 March 2007

4:13 PM
13/06/2007

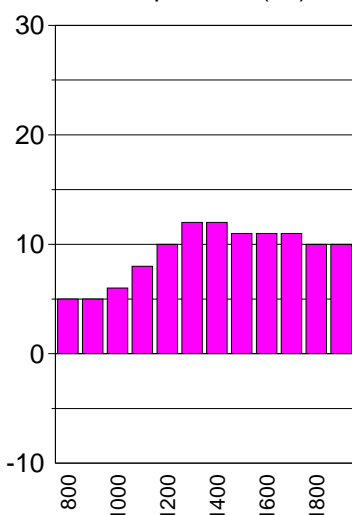
Hour Ending GMT	Wind Dirn	10 Minute Mean Wind @10m (mph)	Max Gust @10m (mph)	Air Temp (°C)	Relative Humidity	Rain (mm)	Sun (hours)	State of Ground	Significant Weather
0800	270°	8.0	11.0	5.0	85%	0.0		N/A	N/A
0900	270°	7.0	10.0	5.0	87%	0.0		N/A	N/A
1000	270°	4.0	6.0	6.0	87%	0.0		N/A	N/A
1100	270°	8.0	11.0	8.0	84%	0.0		N/A	N/A
1200	270°	14.0	20.0	10.0	76%	0.0		N/A	N/A
1300	270°	13.0	19.0	12.0	60%	0.1		N/A	N/A
1400	270°	13.0	19.0	12.0	53%	0.2		N/A	N/A
1500	270°	13.0	19.0	11.0	47%	0.0		N/A	N/A
1600	270°	9.0	13.0	11.0	65%	0.0		N/A	N/A
1700	270°	7.0	10.0	11.0	56%	0.0		N/A	N/A
1800	270°	9.0	13.0	10.0	54%	0.0		N/A	N/A
1900	225°	10.0	14.0	10.0	52%	0.0		N/A	N/A

Highest	14.0	20.0	12.0		
Lowest			5.0		
Totals				0.3	

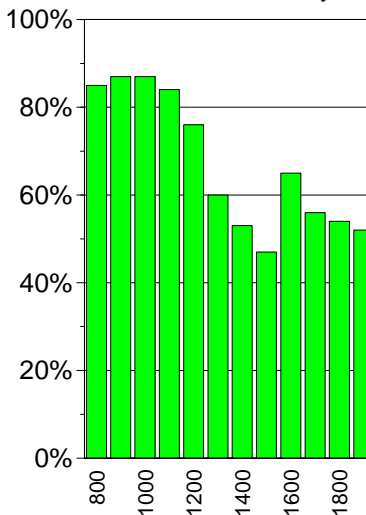
Mean Wind & Max Gust (mph)



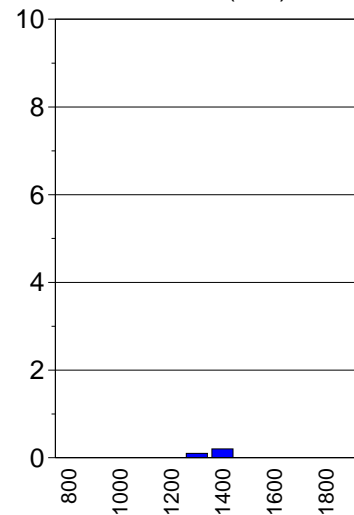
Temperature (°C)



Relative Humidity



Rainfall (mm)



Weather for the Working Day at SAMPLE

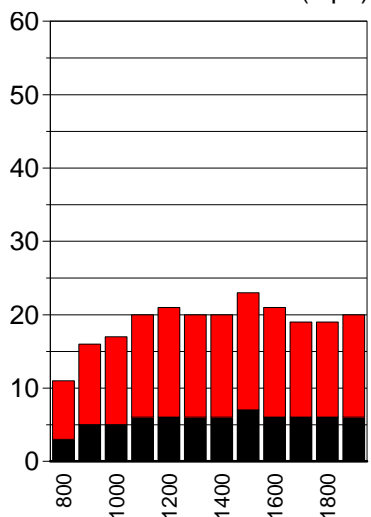
Sunday 04 March 2007

4:13 PM
13/06/2007

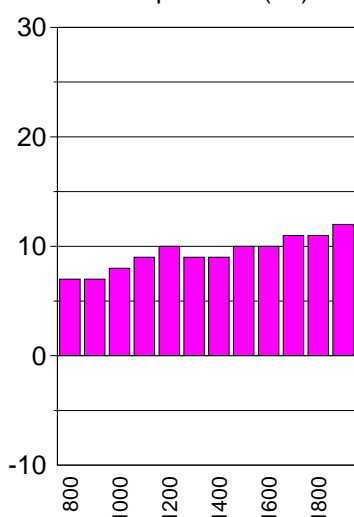
Hour Ending GMT	Wind Dirn	10 Minute Mean Wind @10m (mph)	Max Gust @10m (mph)	Air Temp (°C)	Relative Humidity	Rain (mm)	Sun (hours)	State of Ground	Significant Weather
0800	135°	8.0	11.0	7.0	93%	0.0		N/A	N/A
0900	135°	11.0	16.0	7.0	90%	0.1		N/A	N/A
1000	135°	12.0	17.0	8.0	86%	0.3		N/A	N/A
1100	135°	14.0	20.0	9.0	81%	1.0		N/A	N/A
1200	135°	15.0	21.0	10.0	78%	1.0		N/A	N/A
1300	135°	14.0	20.0	9.0	80%	1.5		N/A	N/A
1400	135°	14.0	20.0	9.0	88%	2.0		N/A	N/A
1500	135°	16.0	23.0	10.0	90%	0.8		N/A	N/A
1600	135°	15.0	21.0	10.0	92%	0.6		N/A	N/A
1700	135°	13.0	19.0	11.0	91%	0.0		N/A	N/A
1800	135°	13.0	19.0	11.0	88%	4.1		N/A	N/A
1900	135°	14.0	20.0	12.0	86%	1.0		N/A	N/A

Highest	16.0	23.0	12.0	
Lowest			7.0	
Totals				12.4

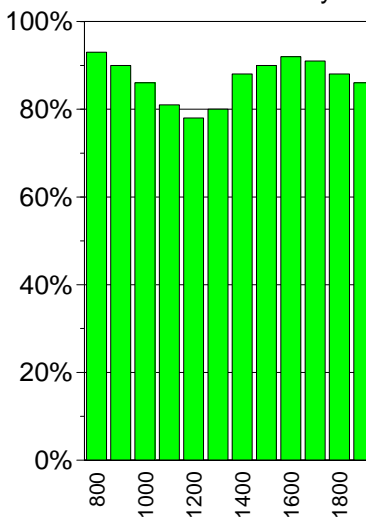
Mean Wind & Max Gust (mph)



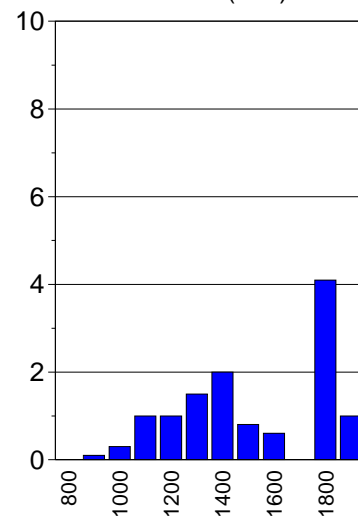
Temperature (°C)



Relative Humidity



Rainfall (mm)



Weather for the Working Day at SAMPLE

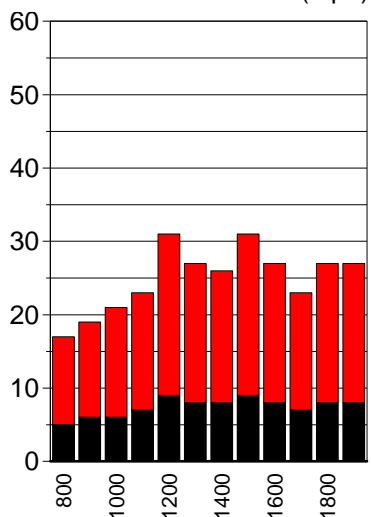
Monday 05 March 2007

4:13 PM
13/06/2007

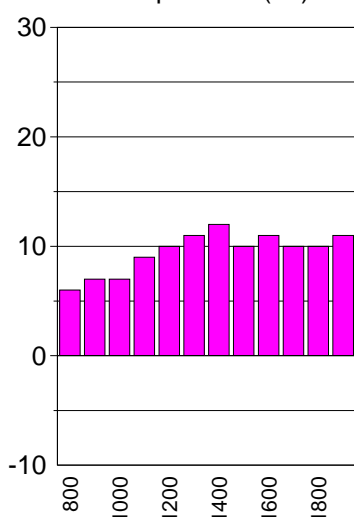
Hour Ending GMT	Wind Dirn	10 Minute Mean Wind @10m (mph)	Max Gust @10m (mph)	Air Temp (°C)	Relative Humidity	Rain (mm)	Sun (hours)	State of Ground	Significant Weather
0800	225°	12.0	17.0	6.0	67%	0.0		N/A	N/A
0900	225°	13.0	19.0	7.0	69%	0.0		N/A	N/A
1000	225°	15.0	21.0	7.0	65%	0.0		N/A	N/A
1100	225°	16.0	23.0	9.0	59%	0.0		N/A	N/A
1200	225°	22.0	31.0	10.0	53%	0.0		N/A	N/A
1300	225°	19.0	27.0	11.0	50%	0.0		N/A	N/A
1400	225°	18.0	26.0	12.0	47%	0.0		N/A	N/A
1500	225°	22.0	31.0	10.0	50%	0.0		N/A	N/A
1600	180°	19.0	27.0	11.0	64%	0.0		N/A	N/A
1700	180°	16.0	23.0	10.0	69%	0.0		N/A	N/A
1800	180°	19.0	27.0	10.0	69%	0.0		N/A	N/A
1900	180°	19.0	27.0	11.0	67%	0.1		N/A	N/A

Highest	22.0	31.0	12.0		
Lowest			6.0		
Totals				0.1	

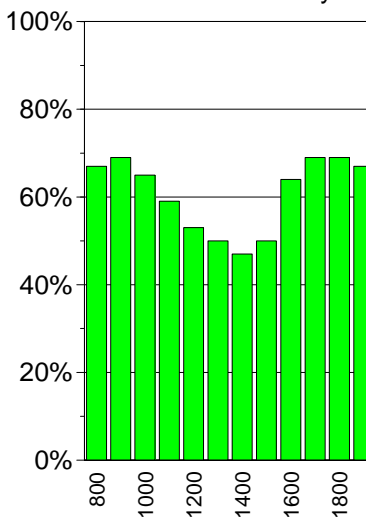
Mean Wind & Max Gust (mph)



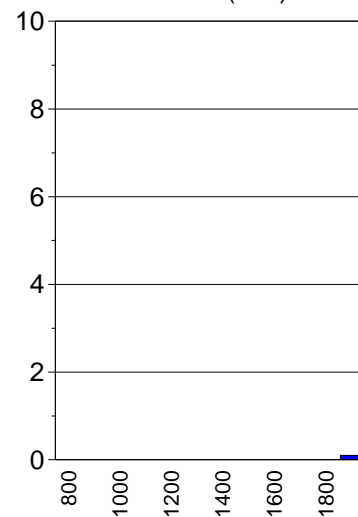
Temperature (°C)



Relative Humidity



Rainfall (mm)



Weather for the Working Day at SAMPLE

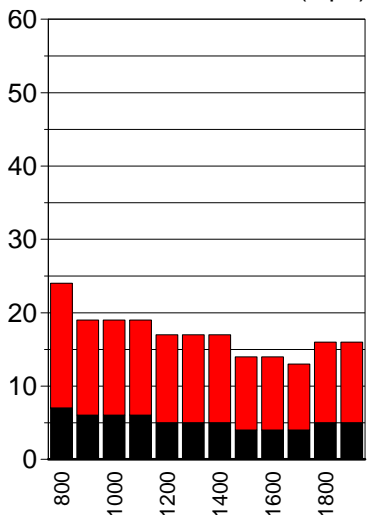
Tuesday 06 March 2007

4:13 PM
13/06/2007

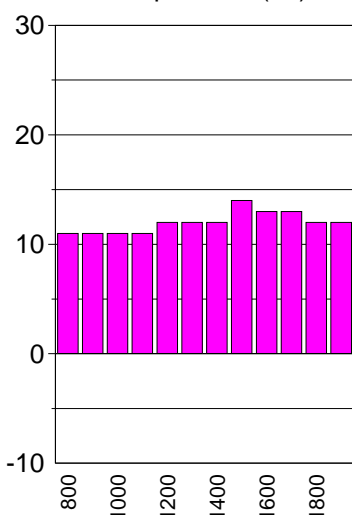
Hour Ending GMT	Wind Dirn	10 Minute Mean Wind @10m (mph)	Max Gust @10m (mph)	Air Temp (°C)	Relative Humidity	Rain (mm)	Sun (hours)	State of Ground	Significant Weather
0800	180°	17.0	24.0	11.0	84%	0.0		N/A	N/A
0900	225°	13.0	19.0	11.0	86%	0.0		N/A	N/A
1000	225°	13.0	19.0	11.0	82%	0.0		N/A	N/A
1100	270°	13.0	19.0	11.0	79%	0.0		N/A	N/A
1200	270°	12.0	17.0	12.0	70%	0.0		N/A	N/A
1300	225°	12.0	17.0	12.0	64%	0.0		N/A	N/A
1400	225°	12.0	17.0	12.0	52%	0.0		N/A	N/A
1500	225°	10.0	14.0	14.0	47%	0.0		N/A	N/A
1600	225°	10.0	14.0	13.0	50%	0.0		N/A	N/A
1700	225°	9.0	13.0	13.0	59%	0.0		N/A	N/A
1800	225°	11.0	16.0	12.0	58%	0.0		N/A	N/A
1900	225°	11.0	16.0	12.0	64%	0.0		N/A	N/A

Highest	17.0	24.0	14.0		
Lowest			11.0		
Totals				0.0	

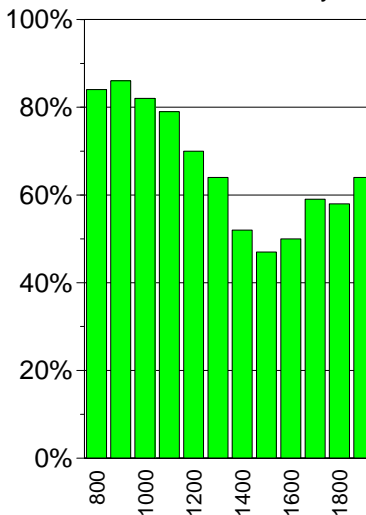
Mean Wind & Max Gust (mph)



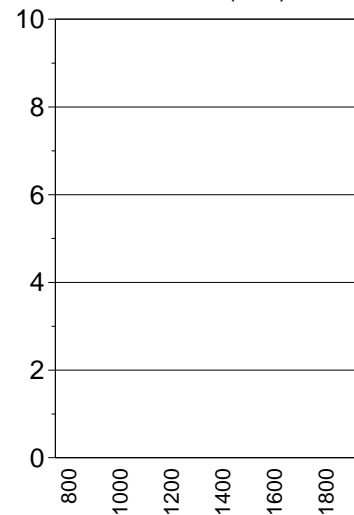
Temperature (°C)



Relative Humidity



Rainfall (mm)



Weather for the Working Day at SAMPLE

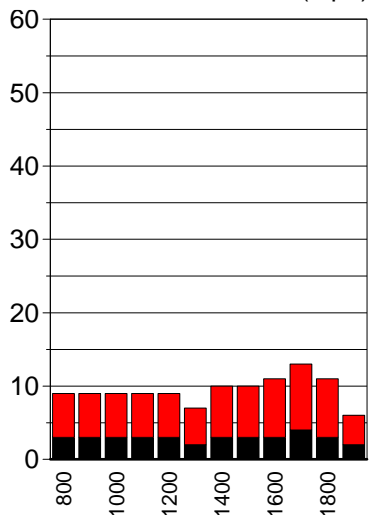
Wednesday 07 March 2007

4:13 PM
13/06/2007

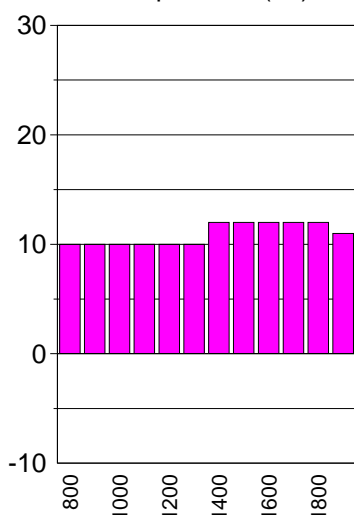
Hour Ending GMT	Wind Dirn	10 Minute Mean Wind @10m (mph)	Max Gust @10m (mph)	Air Temp (°C)	Relative Humidity	Rain (mm)	Sun (hours)	State of Ground	Significant Weather
0800	270°	6.0	9.0	10.0	91%	0.0		N/A	N/A
0900	270°	6.0	9.0	10.0	87%	0.0		N/A	N/A
1000	270°	6.0	9.0	10.0	83%	0.0		N/A	N/A
1100	270°	6.0	9.0	10.0	79%	0.0		N/A	N/A
1200	270°	6.0	9.0	10.0	69%	0.0		N/A	N/A
1300	315°	5.0	7.0	10.0	60%	0.0		N/A	N/A
1400	270°	7.0	10.0	12.0	53%	0.0		N/A	N/A
1500	270°	7.0	10.0	12.0	53%	0.0		N/A	N/A
1600	270°	8.0	11.0	12.0	53%	0.0		N/A	N/A
1700	270°	9.0	13.0	12.0	49%	0.0		N/A	N/A
1800	315°	8.0	11.0	12.0	51%	0.0		N/A	N/A
1900	315°	4.0	6.0	11.0	56%	0.0		N/A	N/A

Highest	<input type="text" value="9.0"/>	<input type="text" value="13.0"/>	<input type="text" value="12.0"/>	<input type="text" value="0.0"/>	<input type="text" value=""/>
Lowest			<input type="text" value="10.0"/>		
Totals				<input type="text" value="0.0"/>	<input type="text" value=""/>

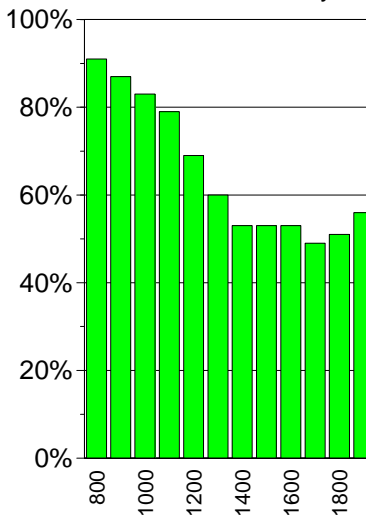
Mean Wind & Max Gust (mph)



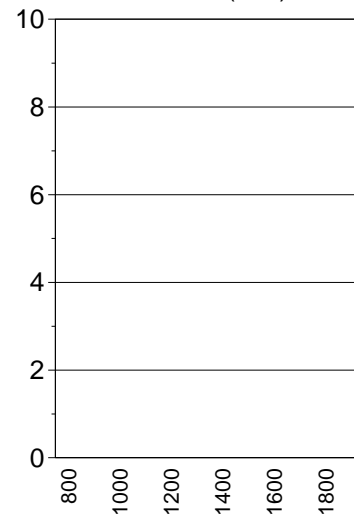
Temperature (°C)



Relative Humidity



Rainfall (mm)



Weather for the Working Day at SAMPLE

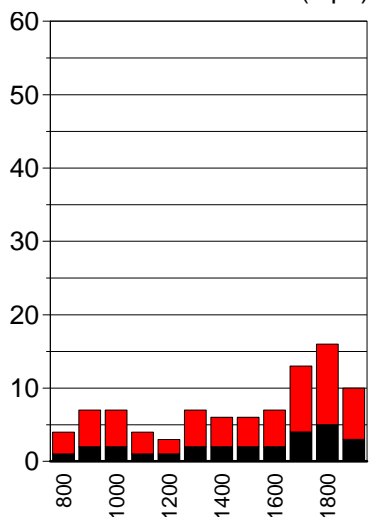
Thursday 08 March 2007

4:13 PM
13/06/2007

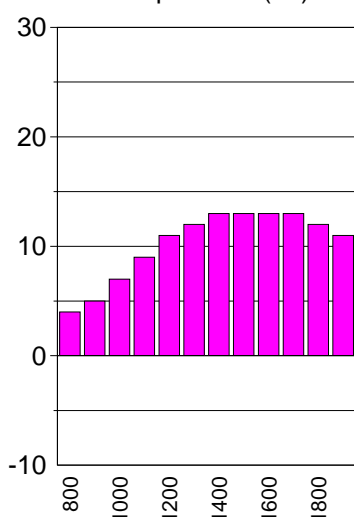
Hour Ending GMT	Wind Dirn	10 Minute Mean Wind @10m (mph)	Max Gust @10m (mph)	Air Temp (°C)	Relative Humidity	Rain (mm)	Sun (hours)	State of Ground	Significant Weather
0800	315°	3.0	4.0	4.0	79%	0.0		N/A	N/A
0900	270°	5.0	7.0	5.0	77%	0.0		N/A	N/A
1000	270°	5.0	7.0	7.0	73%	0.0		N/A	N/A
1100	270°	3.0	4.0	9.0	71%	0.0		N/A	N/A
1200	270°	2.0	3.0	11.0	63%	0.0		N/A	N/A
1300	225°	5.0	7.0	12.0	55%	0.0		N/A	N/A
1400	225°	4.0	6.0	13.0	53%	0.0		N/A	N/A
1500	225°	4.0	6.0	13.0	45%	0.0		N/A	N/A
1600	225°	5.0	7.0	13.0	45%	0.0		N/A	N/A
1700	225°	9.0	13.0	13.0	47%	0.0		N/A	N/A
1800	225°	11.0	16.0	12.0	46%	0.0		N/A	N/A
1900	225°	7.0	10.0	11.0	53%	0.0		N/A	N/A

Highest	11.0	16.0	13.0		
Lowest			4.0		
Totals				0.0	

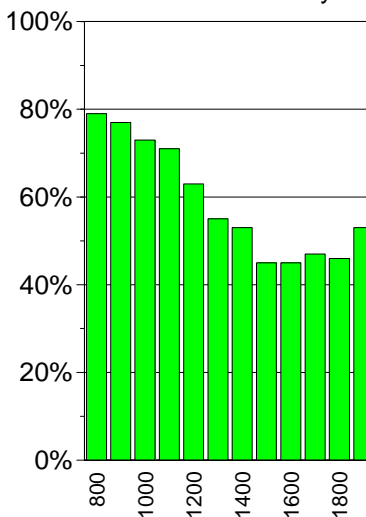
Mean Wind & Max Gust (mph)



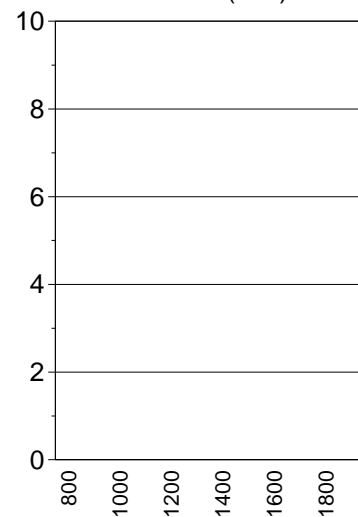
Temperature (°C)



Relative Humidity



Rainfall (mm)



Weather for the Working Day at SAMPLE

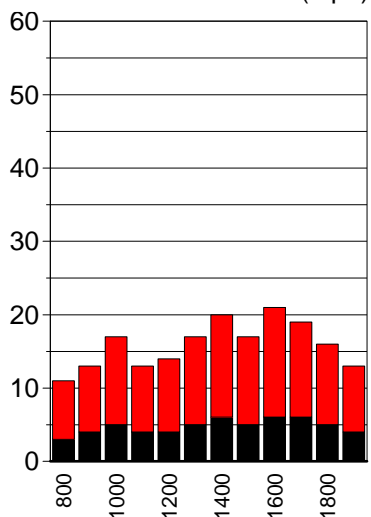
Friday 09 March 2007

4:13 PM
13/06/2007

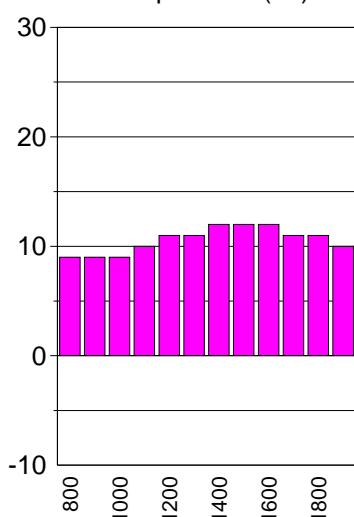
Hour Ending GMT	Wind Dirn	10 Minute Mean Wind @10m (mph)	Max Gust @10m (mph)	Air Temp (°C)	Relative Humidity	Rain (mm)	Sun (hours)	State of Ground	Significant Weather
0800	270°	8.0	11.0	9.0	90%	0.0		N/A	N/A
0900	270°	9.0	13.0	9.0	86%	0.0		N/A	N/A
1000	270°	12.0	17.0	9.0	71%	0.0		N/A	N/A
1100	315°	9.0	13.0	10.0	62%	0.0		N/A	N/A
1200	270°	10.0	14.0	11.0	54%	0.0		N/A	N/A
1300	270°	12.0	17.0	11.0	49%	0.0		N/A	N/A
1400	270°	14.0	20.0	12.0	44%	0.0		N/A	N/A
1500	270°	12.0	17.0	12.0	51%	0.0		N/A	N/A
1600	270°	15.0	21.0	12.0	46%	0.0		N/A	N/A
1700	270°	13.0	19.0	11.0	49%	0.0		N/A	N/A
1800	270°	11.0	16.0	11.0	41%	0.0		N/A	N/A
1900	270°	9.0	13.0	10.0	46%	0.0		N/A	N/A

Highest	15.0	21.0	12.0		
Lowest			9.0		
Totals				0.0	

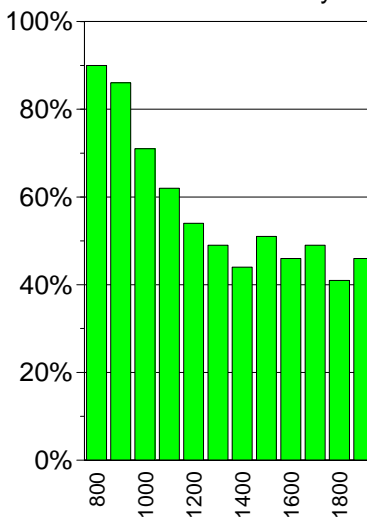
Mean Wind & Max Gust (mph)



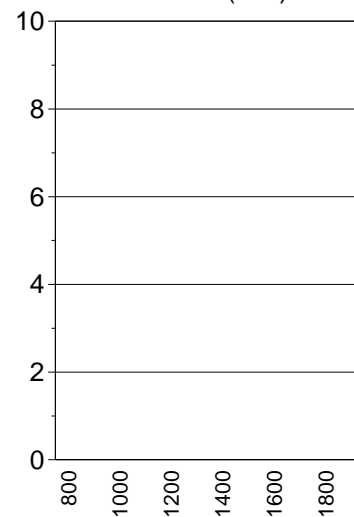
Temperature (°C)



Relative Humidity



Rainfall (mm)



Weather for the Working Day at SAMPLE

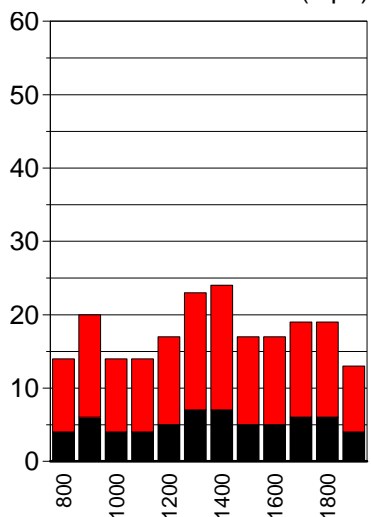
Saturday 10 March 2007

4:13 PM
13/06/2007

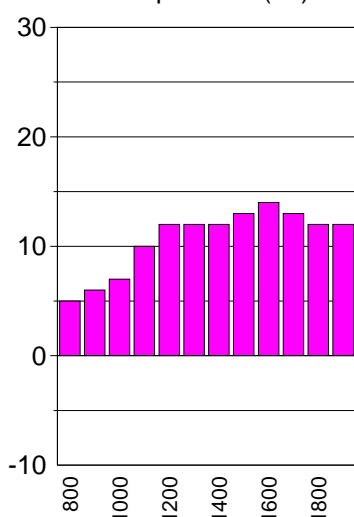
Hour Ending GMT	Wind Dirn	10 Minute Mean Wind @10m (mph)	Max Gust @10m (mph)	Air Temp (°C)	Relative Humidity	Rain (mm)	Sun (hours)	State of Ground	Significant Weather
0800	180°	10.0	14.0	5.0	87%	0.0		N/A	N/A
0900	225°	14.0	20.0	6.0	83%	0.0		N/A	N/A
1000	225°	10.0	14.0	7.0	82%	0.0		N/A	N/A
1100	225°	10.0	14.0	10.0	78%	0.0		N/A	N/A
1200	225°	12.0	17.0	12.0	67%	0.0		N/A	N/A
1300	225°	16.0	23.0	12.0	59%	0.0		N/A	N/A
1400	225°	17.0	24.0	12.0	59%	0.0		N/A	N/A
1500	270°	12.0	17.0	13.0	56%	0.0		N/A	N/A
1600	225°	12.0	17.0	14.0	55%	0.0		N/A	N/A
1700	270°	13.0	19.0	13.0	55%	0.0		N/A	N/A
1800	225°	13.0	19.0	12.0	56%	0.0		N/A	N/A
1900	225°	9.0	13.0	12.0	59%	0.0		N/A	N/A

Highest	17.0	24.0	14.0		
Lowest			5.0		
Totals				0.0	

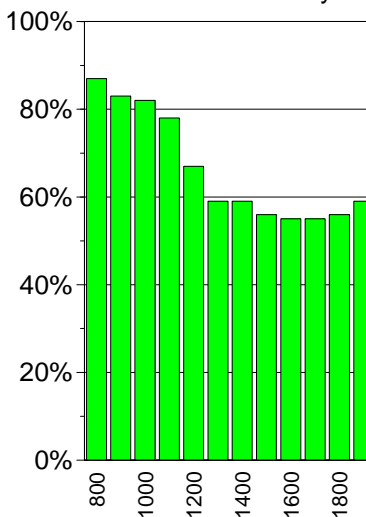
Mean Wind & Max Gust (mph)



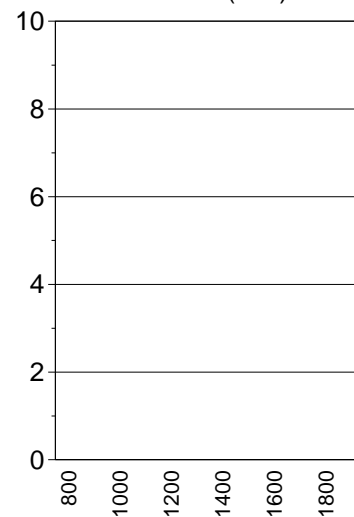
Temperature (°C)



Relative Humidity



Rainfall (mm)



Weather for the Working Day at SAMPLE

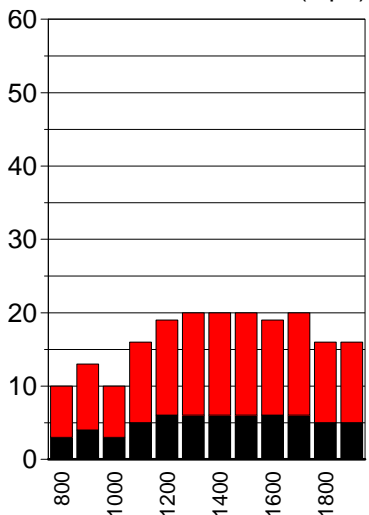
Sunday 11 March 2007

4:13 PM
13/06/2007

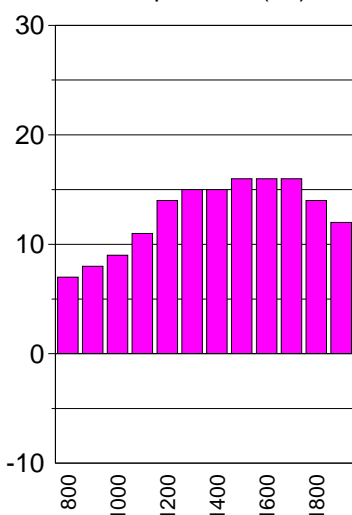
Hour Ending GMT	Wind Dirn	10 Minute Mean Wind @10m (mph)	Max Gust @10m (mph)	Air Temp (°C)	Relative Humidity	Rain (mm)	Sun (hours)	State of Ground	Significant Weather
0800	180°	7.0	10.0	7.0	88%	0.0		N/A	N/A
0900	180°	9.0	13.0	8.0	85%	0.0		N/A	N/A
1000	225°	7.0	10.0	9.0	80%	0.0		N/A	N/A
1100	180°	11.0	16.0	11.0	70%	0.0		N/A	N/A
1200	180°	13.0	19.0	14.0	61%	0.0		N/A	N/A
1300	180°	14.0	20.0	15.0	50%	0.0		N/A	N/A
1400	180°	14.0	20.0	15.0	43%	0.0		N/A	N/A
1500	180°	14.0	20.0	16.0	38%	0.0		N/A	N/A
1600	180°	13.0	19.0	16.0	35%	0.0		N/A	N/A
1700	180°	14.0	20.0	16.0	34%	0.0		N/A	N/A
1800	225°	11.0	16.0	14.0	34%	0.0		N/A	N/A
1900	180°	11.0	16.0	12.0	42%	0.0		N/A	N/A

Highest	14.0	20.0	16.0		
Lowest			7.0		
Totals				0.0	

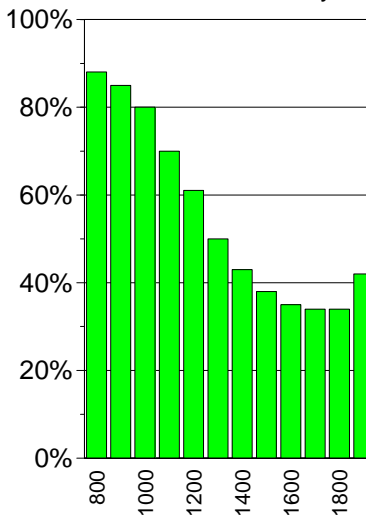
Mean Wind & Max Gust (mph)



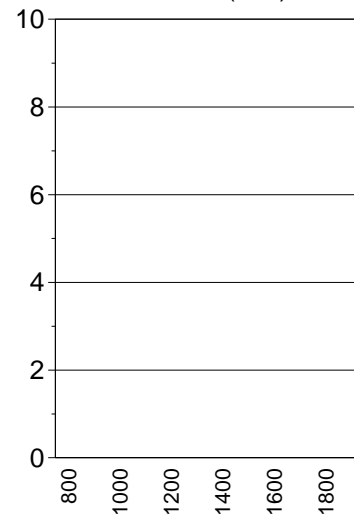
Temperature (°C)



Relative Humidity



Rainfall (mm)



Weather for the Working Day at SAMPLE

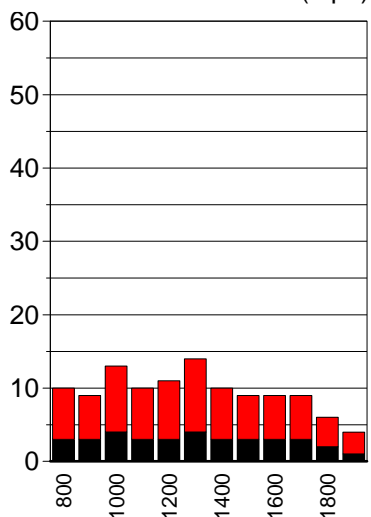
Monday 12 March 2007

4:13 PM
13/06/2007

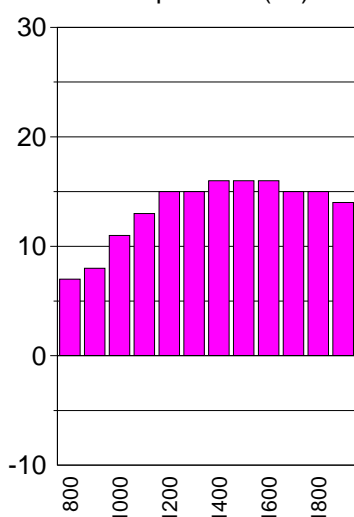
Hour Ending GMT	Wind Dirn	10 Minute Mean Wind @10m (mph)	Max Gust @10m (mph)	Air Temp (°C)	Relative Humidity	Rain (mm)	Sun (hours)	State of Ground	Significant Weather
0800	225°	7.0	10.0	7.0	63%	0.0		N/A	N/A
0900	225°	6.0	9.0	8.0	57%	0.0		N/A	N/A
1000	180°	9.0	13.0	11.0	50%	0.0		N/A	N/A
1100	225°	7.0	10.0	13.0	45%	0.0		N/A	N/A
1200	225°	8.0	11.0	15.0	43%	0.0		N/A	N/A
1300	270°	10.0	14.0	15.0	43%	0.0		N/A	N/A
1400	270°	7.0	10.0	16.0	47%	0.0		N/A	N/A
1500	225°	6.0	9.0	16.0	51%	0.0		N/A	N/A
1600	270°	6.0	9.0	16.0	52%	0.0		N/A	N/A
1700	270°	6.0	9.0	15.0	55%	0.0		N/A	N/A
1800	270°	4.0	6.0	15.0	61%	0.0		N/A	N/A
1900	315°	3.0	4.0	14.0	63%	0.0		N/A	N/A

Highest	<input type="text" value="10.0"/>	<input type="text" value="14.0"/>	<input type="text" value="16.0"/>
Lowest			<input type="text" value="7.0"/>
Totals			<input type="text" value="0.0"/>

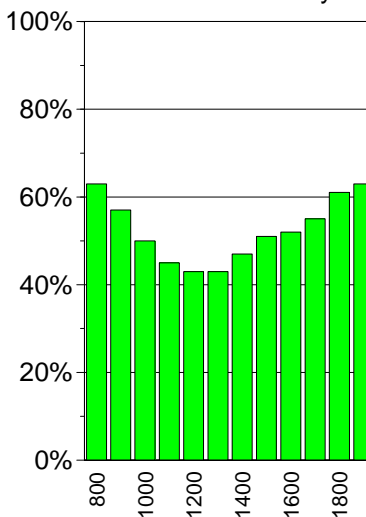
Mean Wind & Max Gust (mph)



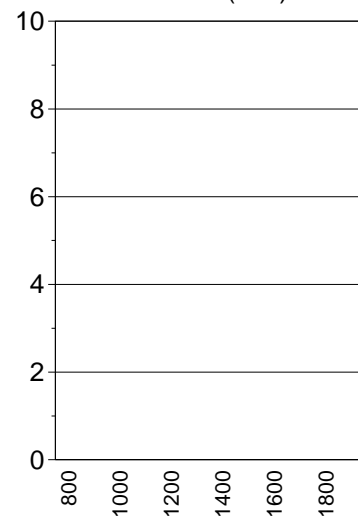
Temperature (°C)



Relative Humidity



Rainfall (mm)



Weather for the Working Day at SAMPLE

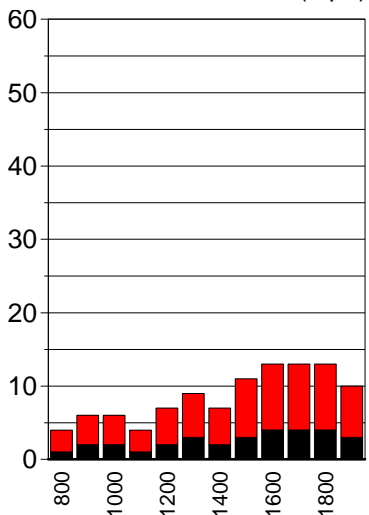
Tuesday 13 March 2007

4:13 PM
13/06/2007

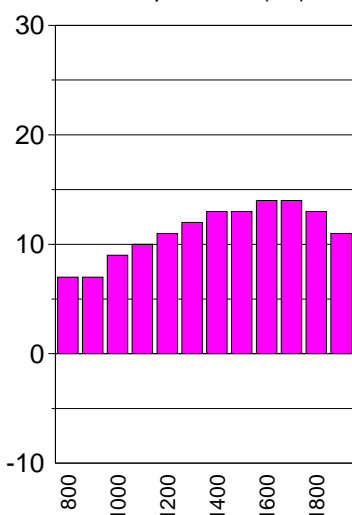
Hour Ending GMT	Wind Dirn	10 Minute Mean Wind @10m (mph)	Max Gust @10m (mph)	Air Temp (°C)	Relative Humidity	Rain (mm)	Sun (hours)	State of Ground	Significant Weather
0800	270°	3.0	4.0	7.0	66%	0.0		N/A	N/A
0900	270°	4.0	6.0	7.0	65%	0.0		N/A	N/A
1000	315°	4.0	6.0	9.0	62%	0.0		N/A	N/A
1100	315°	3.0	4.0	10.0	56%	0.0		N/A	N/A
1200	225°	5.0	7.0	11.0	49%	0.0		N/A	N/A
1300	315°	6.0	9.0	12.0	46%	0.0		N/A	N/A
1400	225°	5.0	7.0	13.0	42%	0.0		N/A	N/A
1500	225°	8.0	11.0	13.0	34%	0.0		N/A	N/A
1600	270°	9.0	13.0	14.0	36%	0.0		N/A	N/A
1700	270°	9.0	13.0	14.0	35%	0.0		N/A	N/A
1800	270°	9.0	13.0	13.0	39%	0.0		N/A	N/A
1900	270°	7.0	10.0	11.0	44%	0.0		N/A	N/A

Highest	9.0	13.0	14.0		
Lowest			7.0		
Totals				0.0	

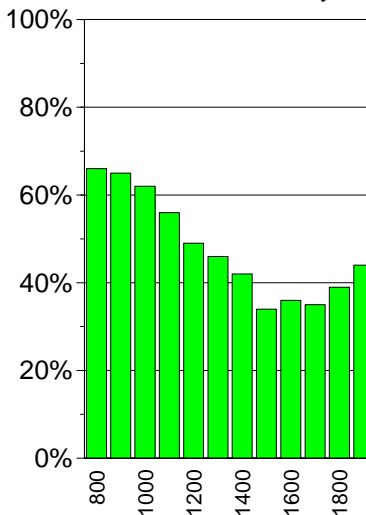
Mean Wind & Max Gust (mph)



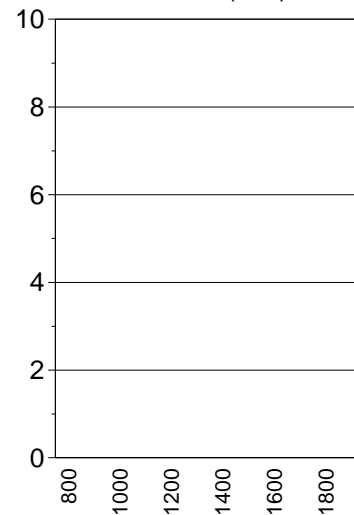
Temperature (°C)



Relative Humidity



Rainfall (mm)



Weather for the Working Day at SAMPLE

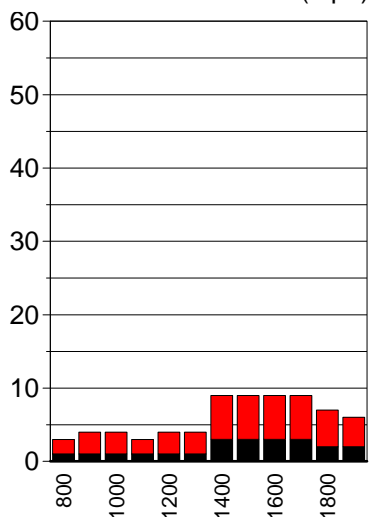
Wednesday 14 March 2007

4:13 PM
13/06/2007

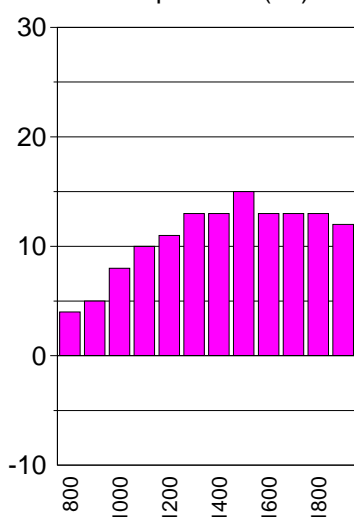
Hour Ending GMT	Wind Dirn	10 Minute Mean Wind @10m (mph)	Max Gust @10m (mph)	Air Temp (°C)	Relative Humidity	Rain (mm)	Sun (hours)	State of Ground	Significant Weather
0800	315°	2.0	3.0	4.0	78%	0.0		N/A	N/A
0900	270°	3.0	4.0	5.0	78%	0.0		N/A	N/A
1000	225°	3.0	4.0	8.0	74%	0.0		N/A	N/A
1100	315°	2.0	3.0	10.0	71%	0.0		N/A	N/A
1200	225°	3.0	4.0	11.0	62%	0.0		N/A	N/A
1300	225°	3.0	4.0	13.0	57%	0.0		N/A	N/A
1400	225°	6.0	9.0	13.0	50%	0.0		N/A	N/A
1500	225°	6.0	9.0	15.0	42%	0.0		N/A	N/A
1600	225°	6.0	9.0	13.0	43%	0.0		N/A	N/A
1700	270°	6.0	9.0	13.0	45%	0.0		N/A	N/A
1800	270°	5.0	7.0	13.0	48%	0.0		N/A	N/A
1900	270°	4.0	6.0	12.0	50%	0.0		N/A	N/A

Highest	6.0	9.0	15.0
Lowest			4.0
Totals			0.0

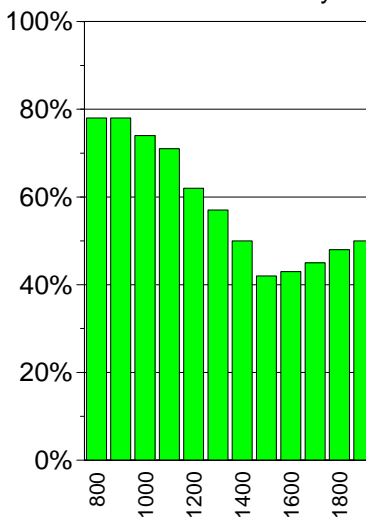
Mean Wind & Max Gust (mph)



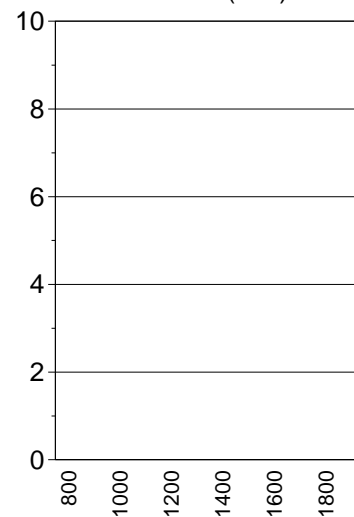
Temperature (°C)



Relative Humidity



Rainfall (mm)



Weather for the Working Day at SAMPLE

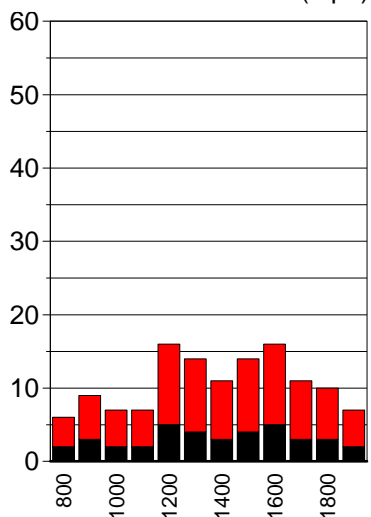
Thursday 15 March 2007

4:13 PM
13/06/2007

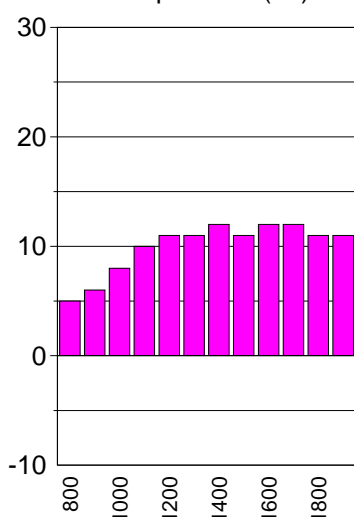
Hour Ending GMT	Wind Dirn	10 Minute Mean Wind @10m (mph)	Max Gust @10m (mph)	Air Temp (°C)	Relative Humidity	Rain (mm)	Sun (hours)	State of Ground	Significant Weather
0800	225°	4.0	6.0	5.0	71%	0.0		N/A	N/A
0900	225°	6.0	9.0	6.0	67%	0.0		N/A	N/A
1000	225°	5.0	7.0	8.0	70%	0.0		N/A	N/A
1100	270°	5.0	7.0	10.0	64%	0.0		N/A	N/A
1200	270°	11.0	16.0	11.0	56%	0.0		N/A	N/A
1300	270°	10.0	14.0	11.0	54%	0.0		N/A	N/A
1400	270°	8.0	11.0	12.0	53%	0.0		N/A	N/A
1500	270°	10.0	14.0	11.0	55%	0.0		N/A	N/A
1600	225°	11.0	16.0	12.0	54%	0.0		N/A	N/A
1700	270°	8.0	11.0	12.0	55%	0.0		N/A	N/A
1800	270°	7.0	10.0	11.0	55%	0.0		N/A	N/A
1900	270°	5.0	7.0	11.0	59%	0.0		N/A	N/A

Highest	11.0	16.0	12.0		
Lowest			5.0		
Totals				0.0	

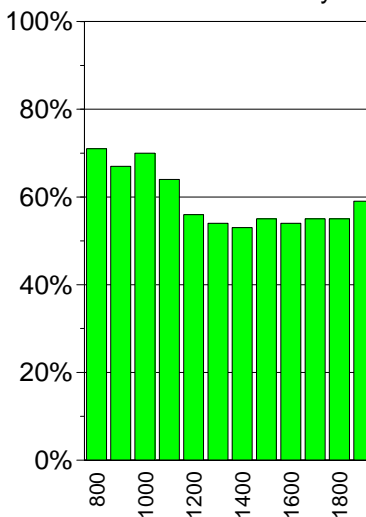
Mean Wind & Max Gust (mph)



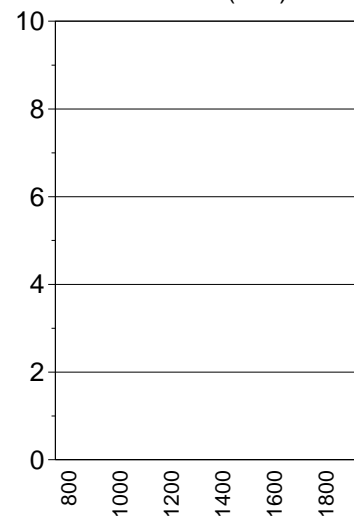
Temperature (°C)



Relative Humidity



Rainfall (mm)



Weather for the Working Day at SAMPLE

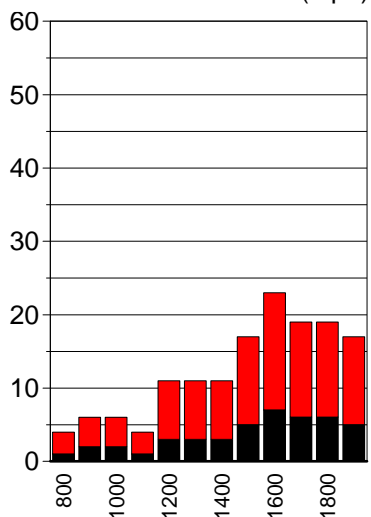
Friday 16 March 2007

4:13 PM
13/06/2007

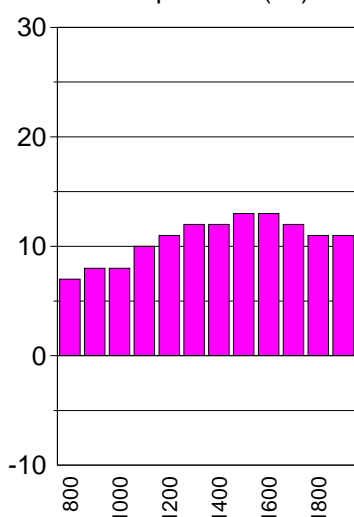
Hour Ending GMT	Wind Dirn	10 Minute Mean Wind @10m (mph)	Max Gust @10m (mph)	Air Temp (°C)	Relative Humidity	Rain (mm)	Sun (hours)	State of Ground	Significant Weather
0800	315°	3.0	4.0	7.0	71%	0.0		N/A	N/A
0900	315°	4.0	6.0	8.0	70%	0.0		N/A	N/A
1000	315°	4.0	6.0	8.0	70%	0.0		N/A	N/A
1100	315°	3.0	4.0	10.0	48%	0.0		N/A	N/A
1200	270°	8.0	11.0	11.0	45%	0.0		N/A	N/A
1300	270°	8.0	11.0	12.0	42%	0.0		N/A	N/A
1400	270°	8.0	11.0	12.0	42%	0.0		N/A	N/A
1500	270°	12.0	17.0	13.0	42%	0.0		N/A	N/A
1600	270°	16.0	23.0	13.0	43%	0.0		N/A	N/A
1700	270°	13.0	19.0	12.0	43%	0.0		N/A	N/A
1800	270°	13.0	19.0	11.0	45%	0.0		N/A	N/A
1900	270°	12.0	17.0	11.0	54%	0.0		N/A	N/A

Highest	16.0	23.0	13.0		
Lowest			7.0		
Totals				0.0	

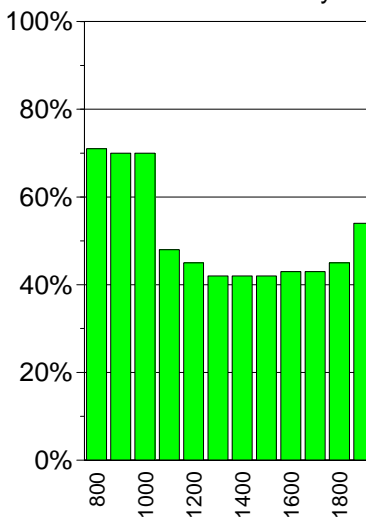
Mean Wind & Max Gust (mph)



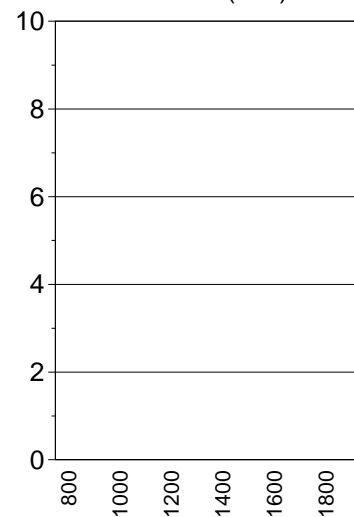
Temperature (°C)



Relative Humidity



Rainfall (mm)



Weather for the Working Day at SAMPLE

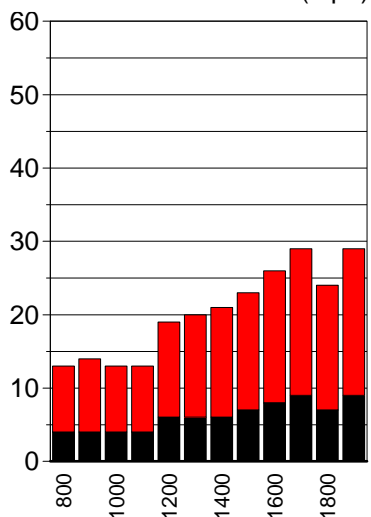
Saturday 17 March 2007

4:13 PM
13/06/2007

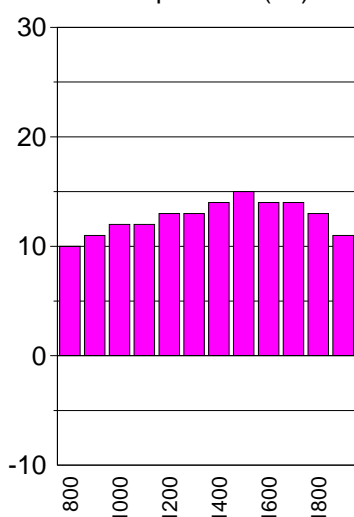
Hour Ending GMT	Wind Dirn	10 Minute Mean Wind @10m (mph)	Max Gust @10m (mph)	Air Temp (°C)	Relative Humidity	Rain (mm)	Sun (hours)	State of Ground	Significant Weather
0800	270°	9.0	13.0	10.0	79%	0.0		N/A	N/A
0900	270°	10.0	14.0	11.0	78%	0.0		N/A	N/A
1000	270°	9.0	13.0	12.0	74%	0.0		N/A	N/A
1100	270°	9.0	13.0	12.0	70%	0.0		N/A	N/A
1200	270°	13.0	19.0	13.0	69%	0.0		N/A	N/A
1300	270°	14.0	20.0	13.0	66%	0.0		N/A	N/A
1400	225°	15.0	21.0	14.0	62%	0.0		N/A	N/A
1500	225°	16.0	23.0	15.0	55%	0.0		N/A	N/A
1600	225°	18.0	26.0	14.0	52%	0.0		N/A	N/A
1700	270°	20.0	29.0	14.0	50%	0.0		N/A	N/A
1800	270°	17.0	24.0	13.0	53%	0.0		N/A	N/A
1900	270°	20.0	29.0	11.0	54%	0.0		N/A	N/A

Highest	<input type="text" value="20.0"/>	<input type="text" value="29.0"/>	<input type="text" value="15.0"/>
Lowest			<input type="text" value="10.0"/>
Totals			<input type="text" value="0.0"/>

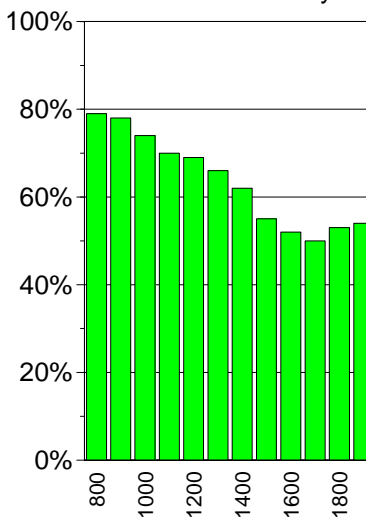
Mean Wind & Max Gust (mph)



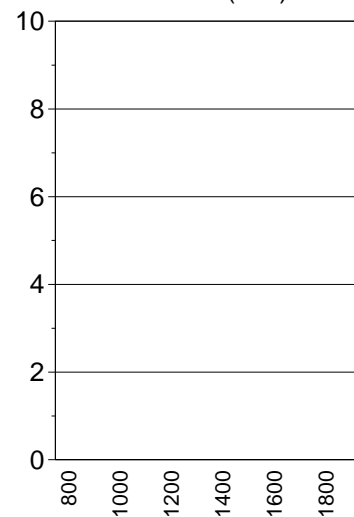
Temperature (°C)



Relative Humidity



Rainfall (mm)



Weather for the Working Day at SAMPLE

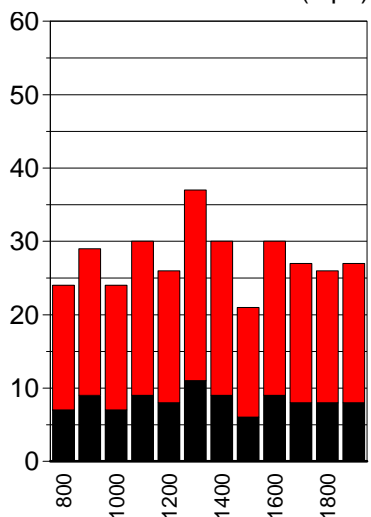
Sunday 18 March 2007

4:13 PM
13/06/2007

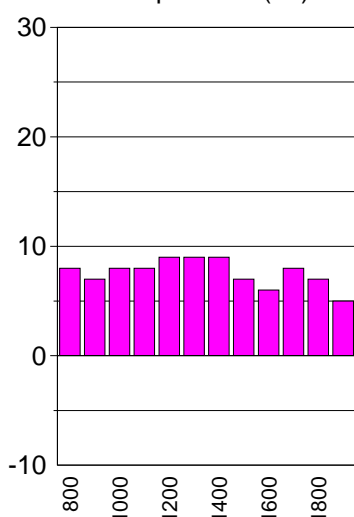
Hour Ending GMT	Wind Dirn	10 Minute Mean Wind @10m (mph)	Max Gust @10m (mph)	Air Temp (°C)	Relative Humidity	Rain (mm)	Sun (hours)	State of Ground	Significant Weather
0800	270°	17.0	24.0	8.0	72%	0.0		N/A	N/A
0900	270°	20.0	29.0	7.0	65%	0.0		N/A	N/A
1000	270°	17.0	24.0	8.0	55%	0.0		N/A	N/A
1100	270°	21.0	30.0	8.0	47%	1.3		N/A	N/A
1200	270°	18.0	26.0	9.0	42%	0.0		N/A	N/A
1300	270°	26.0	37.0	9.0	42%	0.0		N/A	N/A
1400	270°	21.0	30.0	9.0	44%	0.0		N/A	N/A
1500	270°	15.0	21.0	7.0	73%	0.0		N/A	N/A
1600	270°	21.0	30.0	6.0	46%	0.0		N/A	N/A
1700	270°	19.0	27.0	8.0	50%	0.0		N/A	N/A
1800	270°	18.0	26.0	7.0	47%	0.0		N/A	N/A
1900	270°	19.0	27.0	5.0	52%	1.0		N/A	N/A

Highest	26.0	37.0	9.0	
Lowest			5.0	
Totals				2.3

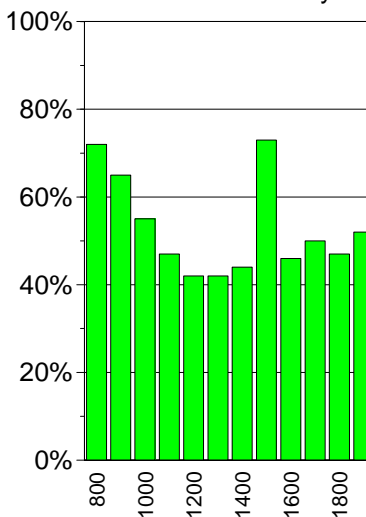
Mean Wind & Max Gust (mph)



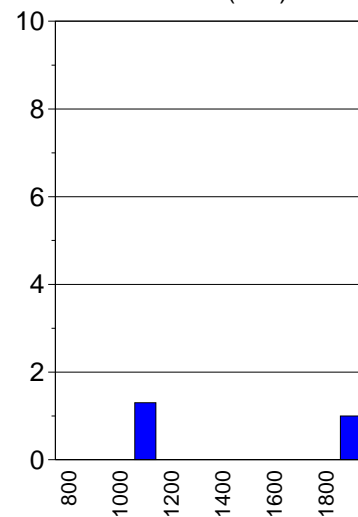
Temperature (°C)



Relative Humidity



Rainfall (mm)



Weather for the Working Day at SAMPLE

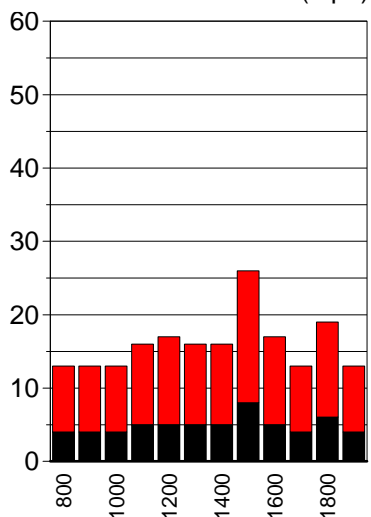
Monday 19 March 2007

4:13 PM
13/06/2007

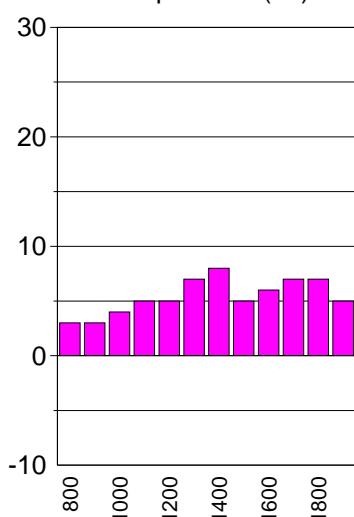
Hour Ending GMT	Wind Dirn	10 Minute Mean Wind @10m (mph)	Max Gust @10m (mph)	Air Temp (°C)	Relative Humidity	Rain (mm)	Sun (hours)	State of Ground	Significant Weather
0800	270°	9.0	13.0	3.0	85%	0.0		N/A	N/A
0900	315°	9.0	13.0	3.0	82%	0.0		N/A	N/A
1000	315°	9.0	13.0	4.0	78%	0.0		N/A	N/A
1100	315°	11.0	16.0	5.0	71%	0.0		N/A	N/A
1200	315°	12.0	17.0	5.0	60%	0.0		N/A	N/A
1300	315°	11.0	16.0	7.0	53%	0.8		N/A	N/A
1400	315°	11.0	16.0	8.0	41%	0.0		N/A	N/A
1500	270°	18.0	26.0	5.0	41%	0.0		N/A	N/A
1600	315°	12.0	17.0	6.0	64%	0.0		N/A	N/A
1700	CALM	9.0	13.0	7.0	57%	0.0		N/A	N/A
1800	315°	13.0	19.0	7.0	46%	0.6		N/A	N/A
1900	315°	9.0	13.0	5.0	84%	0.1		N/A	N/A

Highest	18.0	26.0	8.0
Lowest			3.0
Totals			1.5

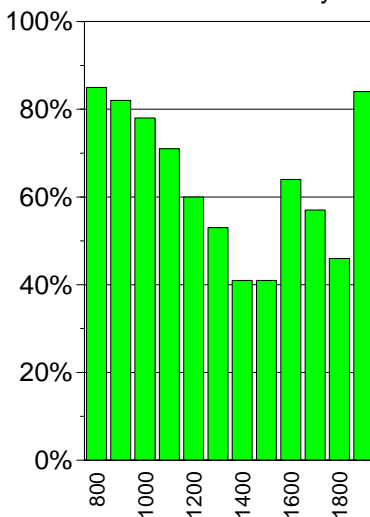
Mean Wind & Max Gust (mph)



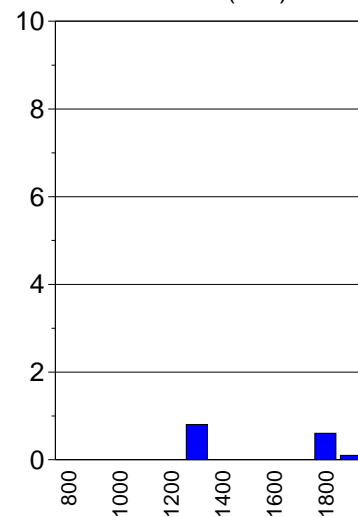
Temperature (°C)



Relative Humidity



Rainfall (mm)



Weather for the Working Day at SAMPLE

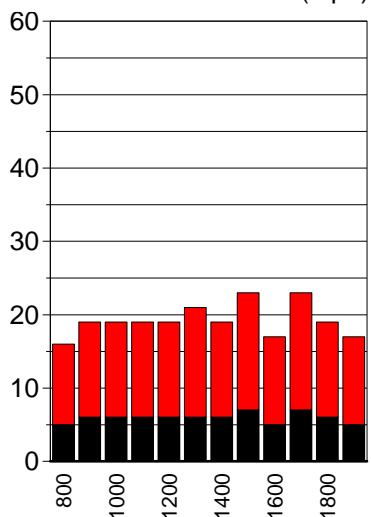
Tuesday 20 March 2007

4:13 PM
13/06/2007

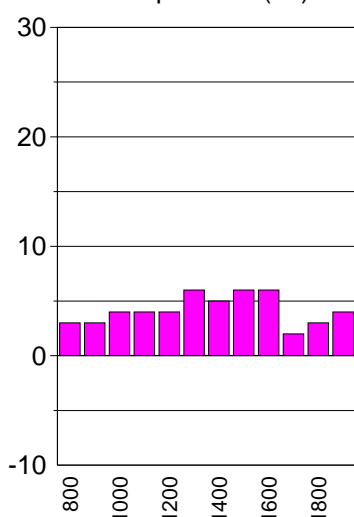
Hour Ending GMT	Wind Dirn	10 Minute Mean Wind @10m (mph)	Max Gust @10m (mph)	Air Temp (°C)	Relative Humidity	Rain (mm)	Sun (hours)	State of Ground	Significant Weather
0800	CALM	11.0	16.0	3.0	88%	0.0		N/A	N/A
0900	CALM	13.0	19.0	3.0	82%	0.0		N/A	N/A
1000	CALM	13.0	19.0	4.0	74%	0.0		N/A	N/A
1100	CALM	13.0	19.0	4.0	70%	0.0		N/A	N/A
1200	CALM	13.0	19.0	4.0	64%	0.0		N/A	N/A
1300	CALM	15.0	21.0	6.0	63%	0.0		N/A	N/A
1400	CALM	13.0	19.0	5.0	60%	0.0		N/A	N/A
1500	CALM	16.0	23.0	6.0	57%	0.0		N/A	N/A
1600	CALM	12.0	17.0	6.0	55%	0.1		N/A	N/A
1700	CALM	16.0	23.0	2.0	61%	0.0		N/A	N/A
1800	CALM	13.0	19.0	3.0	89%	0.0		N/A	N/A
1900	CALM	12.0	17.0	4.0	66%	0.0		N/A	N/A

Highest	16.0	23.0	6.0	
Lowest			2.0	
Totals				0.1

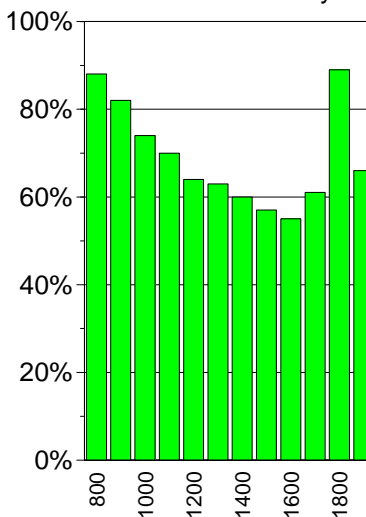
Mean Wind & Max Gust (mph)



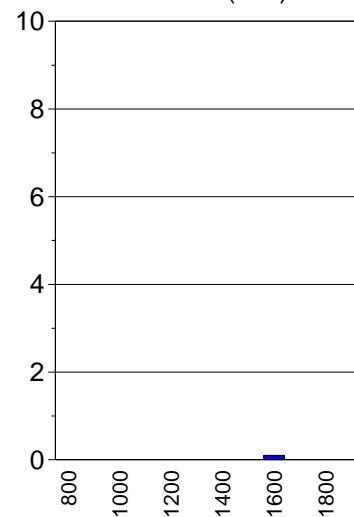
Temperature (°C)



Relative Humidity



Rainfall (mm)



Weather for the Working Day at SAMPLE

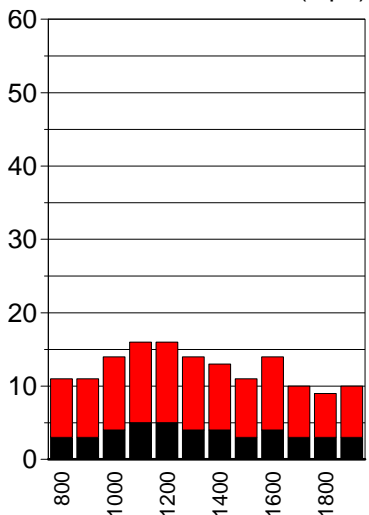
Wednesday 21 March 2007

4:13 PM
13/06/2007

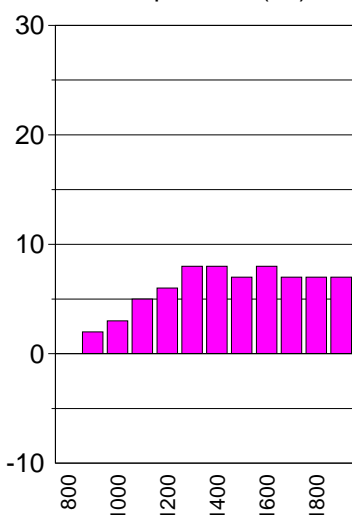
Hour Ending GMT	Wind Dirn	10 Minute Mean Wind @10m (mph)	Max Gust @10m (mph)	Air Temp (°C)	Relative Humidity	Rain (mm)	Sun (hours)	State of Ground	Significant Weather
0800	CALM	8.0	11.0	0.0	78%	0.0		N/A	Air frost
0900	315°	8.0	11.0	2.0	74%	0.0		N/A	N/A
1000	315°	10.0	14.0	3.0	69%	0.0		N/A	N/A
1100	CALM	11.0	16.0	5.0	64%	0.0		N/A	N/A
1200	CALM	11.0	16.0	6.0	56%	0.0		N/A	N/A
1300	CALM	10.0	14.0	8.0	49%	0.0		N/A	N/A
1400	CALM	9.0	13.0	8.0	48%	0.0		N/A	N/A
1500	CALM	8.0	11.0	7.0	44%	0.0		N/A	N/A
1600	315°	10.0	14.0	8.0	40%	0.0		N/A	N/A
1700	CALM	7.0	10.0	7.0	47%	0.0		N/A	N/A
1800	315°	6.0	9.0	7.0	45%	0.0		N/A	N/A
1900	CALM	7.0	10.0	7.0	49%	0.0		N/A	N/A

Highest	11.0	16.0	8.0		
Lowest			0.0		
Totals				0.0	

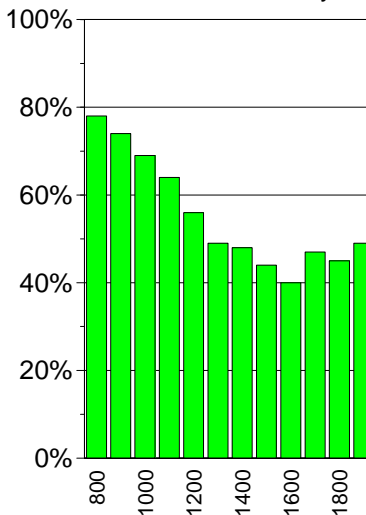
Mean Wind & Max Gust (mph)



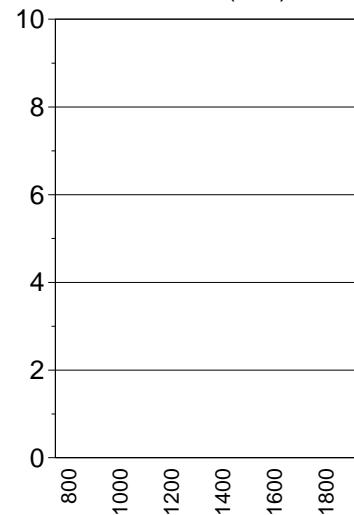
Temperature (°C)



Relative Humidity



Rainfall (mm)



Weather for the Working Day at SAMPLE

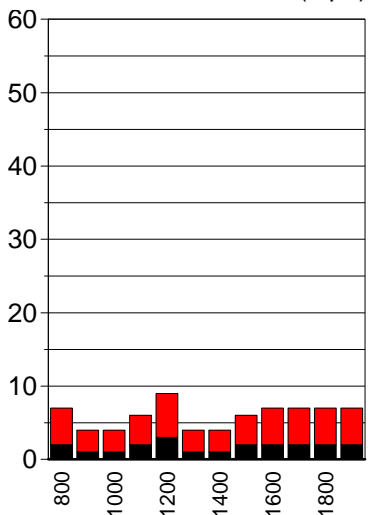
Thursday 22 March 2007

4:13 PM
13/06/2007

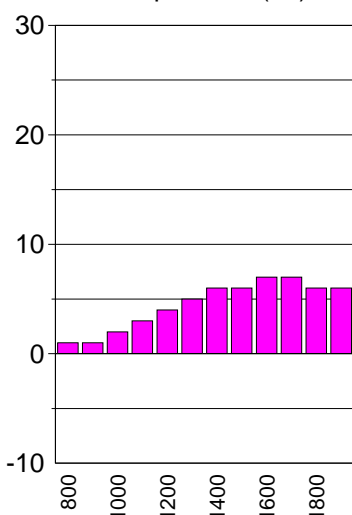
Hour Ending GMT	Wind Dirn	10 Minute Mean Wind @10m (mph)	Max Gust @10m (mph)	Air Temp (°C)	Relative Humidity	Rain (mm)	Sun (hours)	State of Ground	Significant Weather
0800	270°	5.0	7.0	1.0	66%	0.4		N/A	N/A
0900	270°	3.0	4.0	1.0	74%	0.2		N/A	N/A
1000	315°	3.0	4.0	2.0	87%	0.1		N/A	N/A
1100	270°	4.0	6.0	3.0	88%	0.0		N/A	N/A
1200	315°	6.0	9.0	4.0	86%	0.0		N/A	N/A
1300	315°	3.0	4.0	5.0	84%	0.0		N/A	N/A
1400	CALM	3.0	4.0	6.0	82%	0.0		N/A	N/A
1500	45°	4.0	6.0	6.0	79%	0.0		N/A	N/A
1600	45°	5.0	7.0	7.0	77%	0.0		N/A	N/A
1700	CALM	5.0	7.0	7.0	73%	0.0		N/A	N/A
1800	CALM	5.0	7.0	6.0	76%	0.0		N/A	N/A
1900	45°	5.0	7.0	6.0	79%	0.2		N/A	N/A

Highest	<input type="text" value="6.0"/>	<input type="text" value="9.0"/>	<input type="text" value="7.0"/>
Lowest			<input type="text" value="1.0"/>
Totals			<input type="text" value="0.9"/>

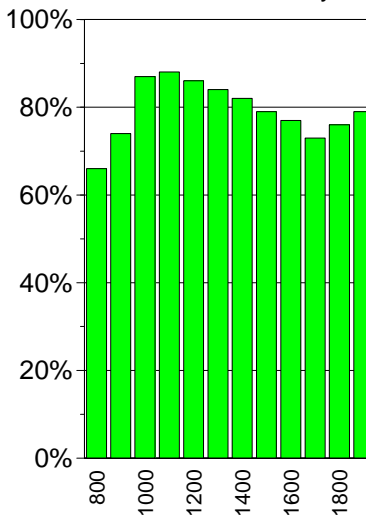
Mean Wind & Max Gust (mph)



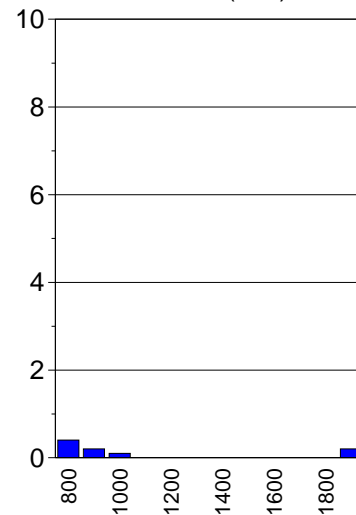
Temperature (°C)



Relative Humidity



Rainfall (mm)



Weather for the Working Day at SAMPLE

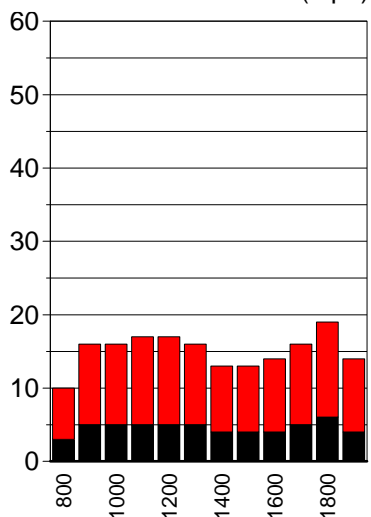
Friday 23 March 2007

4:13 PM
13/06/2007

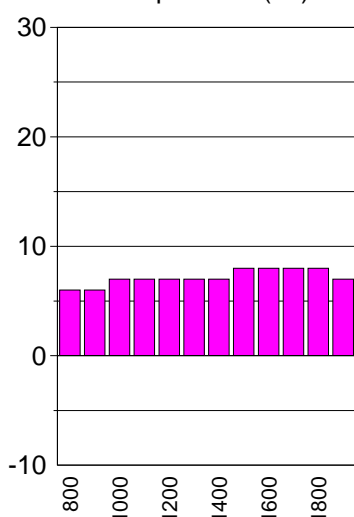
Hour Ending GMT	Wind Dirn	10 Minute Mean Wind @10m (mph)	Max Gust @10m (mph)	Air Temp (°C)	Relative Humidity	Rain (mm)	Sun (hours)	State of Ground	Significant Weather
0800	CALM	7.0	10.0	6.0	88%	0.0		N/A	N/A
0900	CALM	11.0	16.0	6.0	83%	0.0		N/A	N/A
1000	CALM	11.0	16.0	7.0	75%	0.0		N/A	N/A
1100	CALM	12.0	17.0	7.0	77%	0.0		N/A	N/A
1200	CALM	12.0	17.0	7.0	80%	0.0		N/A	N/A
1300	CALM	11.0	16.0	7.0	82%	0.0		N/A	N/A
1400	CALM	9.0	13.0	7.0	85%	0.0		N/A	N/A
1500	CALM	9.0	13.0	8.0	83%	0.1		N/A	N/A
1600	45°	10.0	14.0	8.0	68%	0.0		N/A	N/A
1700	45°	11.0	16.0	8.0	63%	0.0		N/A	N/A
1800	45°	13.0	19.0	8.0	70%	0.0		N/A	N/A
1900	CALM	10.0	14.0	7.0	74%	0.0		N/A	N/A

Highest	13.0	19.0	8.0		
Lowest			6.0		
Totals				0.1	

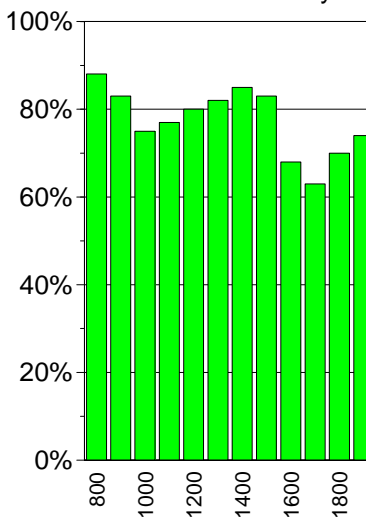
Mean Wind & Max Gust (mph)



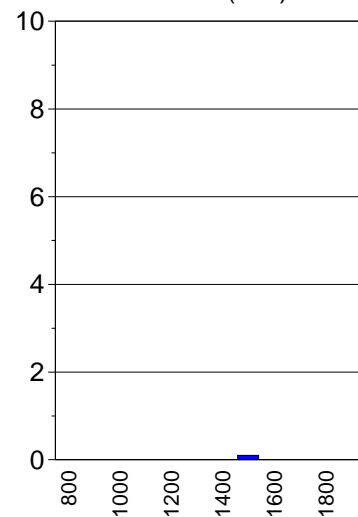
Temperature (°C)



Relative Humidity



Rainfall (mm)



Weather for the Working Day at SAMPLE

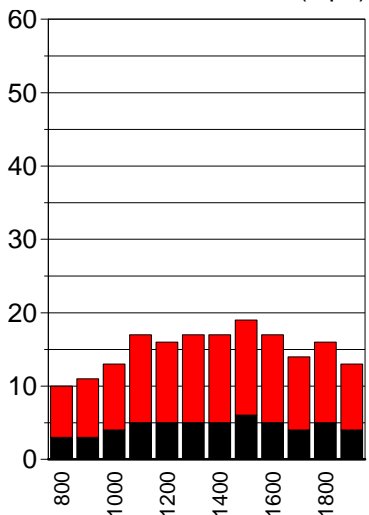
Saturday 24 March 2007

4:13 PM
13/06/2007

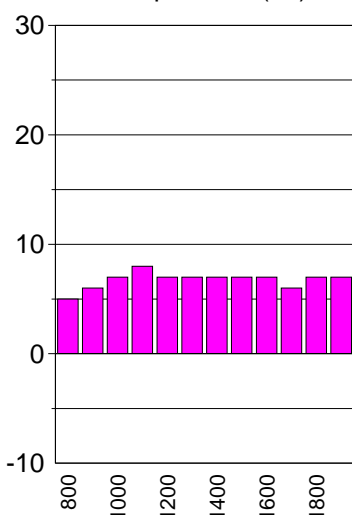
Hour Ending GMT	Wind Dirn	10 Minute Mean Wind @10m (mph)	Max Gust @10m (mph)	Air Temp (°C)	Relative Humidity	Rain (mm)	Sun (hours)	State of Ground	Significant Weather
0800	CALM	7.0	10.0	5.0	90%	0.0		N/A	N/A
0900	CALM	8.0	11.0	6.0	89%	0.0		N/A	N/A
1000	CALM	9.0	13.0	7.0	81%	0.0		N/A	N/A
1100	CALM	12.0	17.0	8.0	75%	0.0		N/A	N/A
1200	CALM	11.0	16.0	7.0	73%	0.0		N/A	N/A
1300	CALM	12.0	17.0	7.0	73%	0.0		N/A	N/A
1400	CALM	12.0	17.0	7.0	77%	0.0		N/A	N/A
1500	CALM	13.0	19.0	7.0	81%	0.0		N/A	N/A
1600	CALM	12.0	17.0	7.0	84%	0.0		N/A	N/A
1700	CALM	10.0	14.0	6.0	88%	0.0		N/A	N/A
1800	CALM	11.0	16.0	7.0	91%	0.0		N/A	N/A
1900	CALM	9.0	13.0	7.0	93%	0.0		N/A	N/A

Highest	13.0	19.0	8.0		
Lowest			5.0		
Totals				0.0	

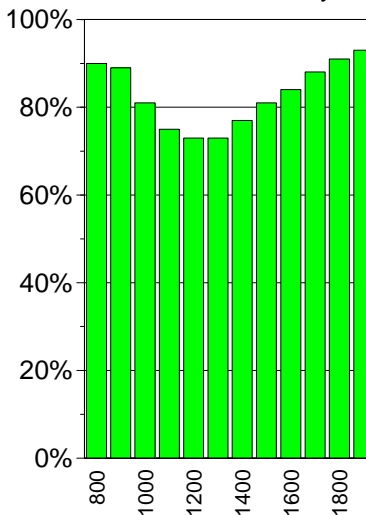
Mean Wind & Max Gust (mph)



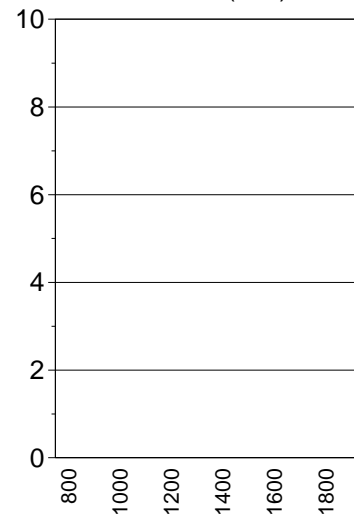
Temperature (°C)



Relative Humidity



Rainfall (mm)



Weather for the Working Day at SAMPLE

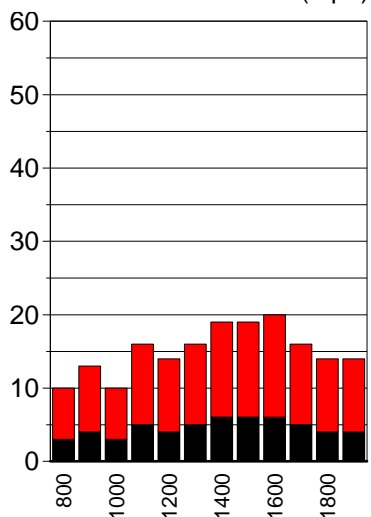
Sunday 25 March 2007

4:13 PM
13/06/2007

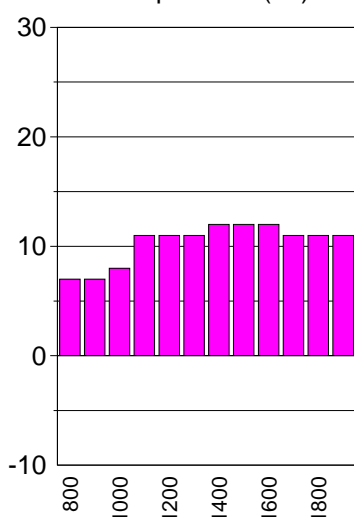
Hour Ending GMT	Wind Dirn	10 Minute Mean Wind @10m (mph)	Max Gust @10m (mph)	Air Temp (°C)	Relative Humidity	Rain (mm)	Sun (hours)	State of Ground	Significant Weather
0800	CALM	7.0	10.0	7.0	91%	0.0		N/A	N/A
0900	45°	9.0	13.0	7.0	89%	0.0		N/A	N/A
1000	45°	7.0	10.0	8.0	85%	0.0		N/A	N/A
1100	45°	11.0	16.0	11.0	79%	0.0		N/A	N/A
1200	90°	10.0	14.0	11.0	69%	0.0		N/A	N/A
1300	90°	11.0	16.0	11.0	63%	0.0		N/A	N/A
1400	90°	13.0	19.0	12.0	61%	0.0		N/A	N/A
1500	90°	13.0	19.0	12.0	59%	0.0		N/A	N/A
1600	90°	14.0	20.0	12.0	56%	0.0		N/A	N/A
1700	45°	11.0	16.0	11.0	59%	0.0		N/A	N/A
1800	90°	10.0	14.0	11.0	61%	0.0		N/A	N/A
1900	90°	10.0	14.0	11.0	57%	0.0		N/A	N/A

Highest	14.0	20.0	12.0		
Lowest			7.0		
Totals				0.0	

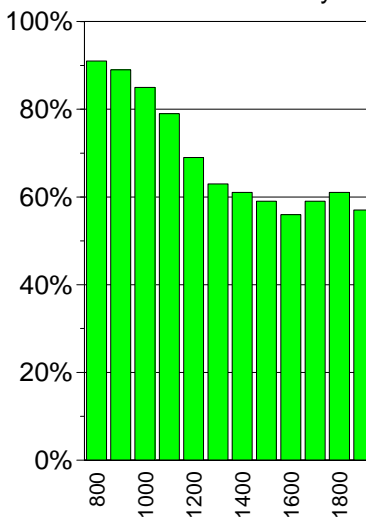
Mean Wind & Max Gust (mph)



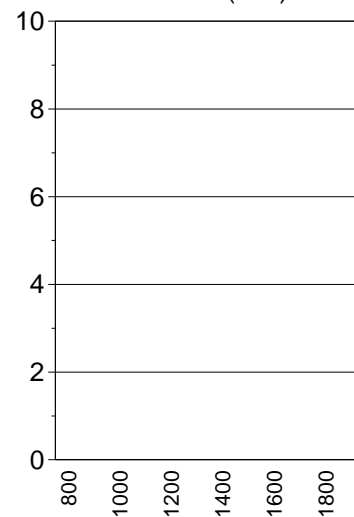
Temperature (°C)



Relative Humidity



Rainfall (mm)



Weather for the Working Day at SAMPLE

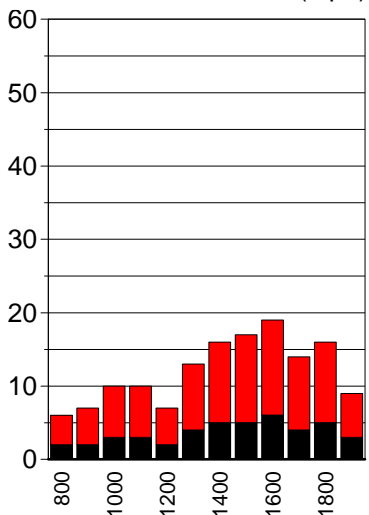
Monday 26 March 2007

4:13 PM
13/06/2007

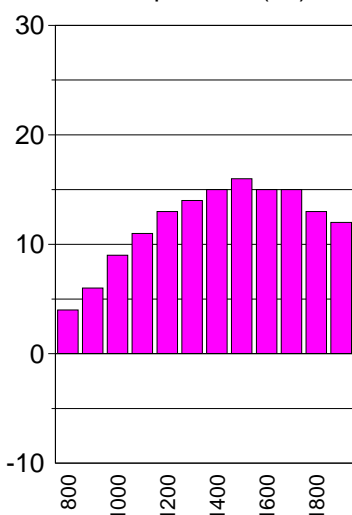
Hour Ending GMT	Wind Dirn	10 Minute Mean Wind @10m (mph)	Max Gust @10m (mph)	Air Temp (°C)	Relative Humidity	Rain (mm)	Sun (hours)	State of Ground	Significant Weather
0800	CALM	4.0	6.0	4.0	87%	0.0		N/A	N/A
0900	45°	5.0	7.0	6.0	84%	0.0		N/A	N/A
1000	45°	7.0	10.0	9.0	82%	0.0		N/A	N/A
1100	45°	7.0	10.0	11.0	78%	0.0		N/A	N/A
1200	45°	5.0	7.0	13.0	69%	0.0		N/A	N/A
1300	45°	9.0	13.0	14.0	60%	0.0		N/A	N/A
1400	90°	11.0	16.0	15.0	53%	0.0		N/A	N/A
1500	90°	12.0	17.0	16.0	45%	0.0		N/A	N/A
1600	90°	13.0	19.0	15.0	43%	0.0		N/A	N/A
1700	90°	10.0	14.0	15.0	43%	0.0		N/A	N/A
1800	90°	11.0	16.0	13.0	46%	0.0		N/A	N/A
1900	45°	6.0	9.0	12.0	51%	0.0		N/A	N/A

Highest	13.0	19.0	16.0		
Lowest			4.0		
Totals				0.0	

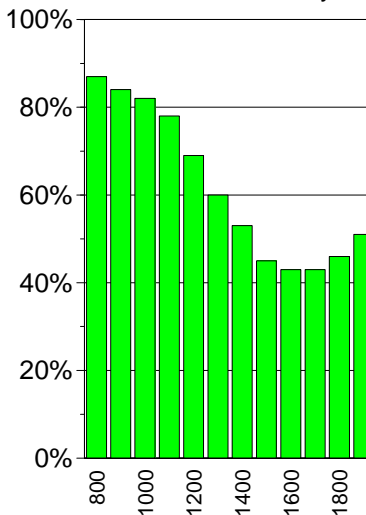
Mean Wind & Max Gust (mph)



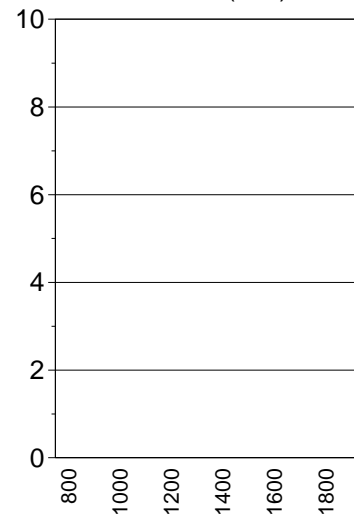
Temperature (°C)



Relative Humidity



Rainfall (mm)



Weather for the Working Day at SAMPLE

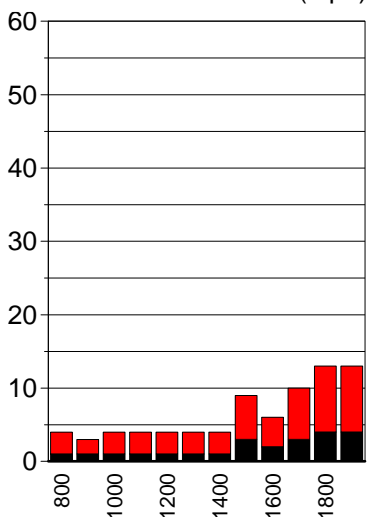
Tuesday 27 March 2007

4:13 PM
13/06/2007

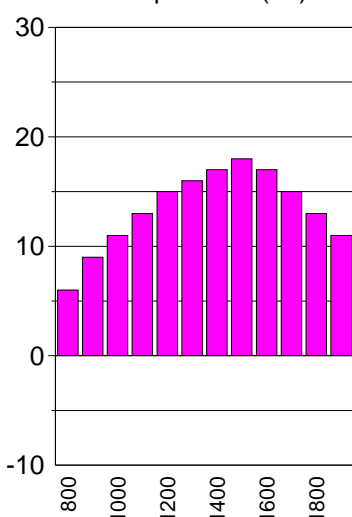
Hour Ending GMT	Wind Dirn	10 Minute Mean Wind @10m (mph)	Max Gust @10m (mph)	Air Temp (°C)	Relative Humidity	Rain (mm)	Sun (hours)	State of Ground	Significant Weather
0800	315°	3.0	4.0	6.0	87%	0.0		N/A	N/A
0900	CALM	2.0	3.0	9.0	86%	0.0		N/A	N/A
1000	CALM	3.0	4.0	11.0	84%	0.0		N/A	N/A
1100	CALM	3.0	4.0	13.0	79%	0.0		N/A	N/A
1200	CALM	3.0	4.0	15.0	73%	0.0		N/A	N/A
1300	CALM	3.0	4.0	16.0	64%	0.0		N/A	N/A
1400	90°	3.0	4.0	17.0	58%	0.0		N/A	N/A
1500	90°	6.0	9.0	18.0	49%	0.0		N/A	N/A
1600	45°	4.0	6.0	17.0	45%	0.0		N/A	N/A
1700	90°	7.0	10.0	15.0	43%	0.0		N/A	N/A
1800	90°	9.0	13.0	13.0	41%	0.0		N/A	N/A
1900	90°	9.0	13.0	11.0	41%	0.0		N/A	N/A

Highest	9.0	13.0	18.0		
Lowest			6.0		
Totals				0.0	

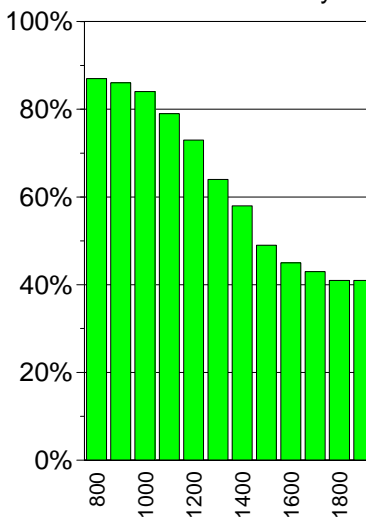
Mean Wind & Max Gust (mph)



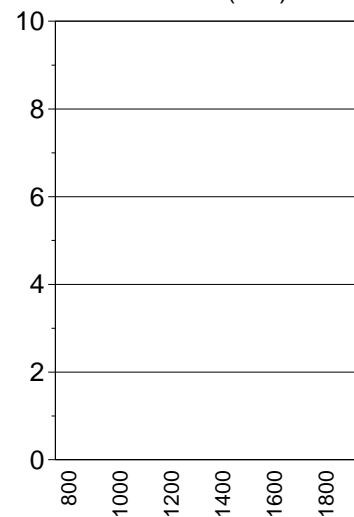
Temperature (°C)



Relative Humidity



Rainfall (mm)



Weather for the Working Day at SAMPLE

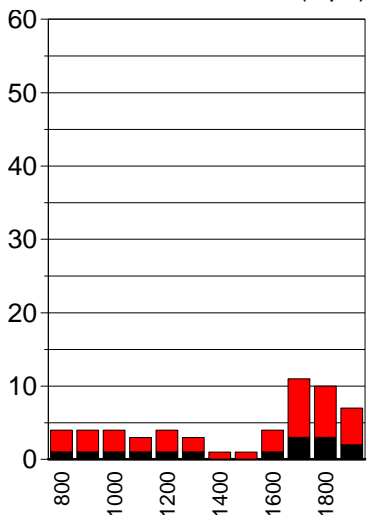
Wednesday 28 March 2007

4:13 PM
13/06/2007

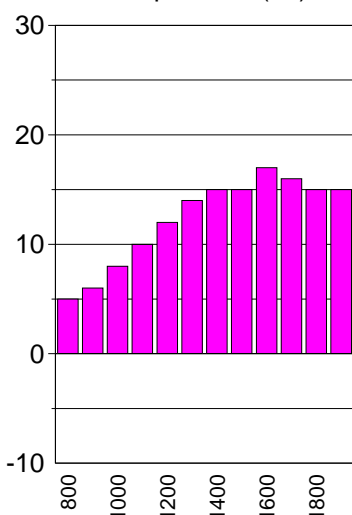
Hour Ending GMT	Wind Dirn	10 Minute Mean Wind @10m (mph)	Max Gust @10m (mph)	Air Temp (°C)	Relative Humidity	Rain (mm)	Sun (hours)	State of Ground	Significant Weather
0800	315°	3.0	4.0	5.0	80%	0.0		N/A	N/A
0900	315°	3.0	4.0	6.0	80%	0.0		N/A	N/A
1000	CALM	3.0	4.0	8.0	79%	0.0		N/A	N/A
1100	270°	2.0	3.0	10.0	77%	0.0		N/A	N/A
1200	315°	3.0	4.0	12.0	69%	0.0		N/A	N/A
1300	315°	2.0	3.0	14.0	60%	0.0		N/A	N/A
1400	45°	1.0	1.0	15.0	53%	0.0		N/A	N/A
1500	45°	1.0	1.0	15.0	47%	0.0		N/A	N/A
1600	225°	3.0	4.0	17.0	41%	0.0		N/A	N/A
1700	315°	8.0	11.0	16.0	51%	0.0		N/A	N/A
1800	315°	7.0	10.0	15.0	52%	0.0		N/A	N/A
1900	CALM	5.0	7.0	15.0	53%	0.0		N/A	N/A

Highest	8.0	11.0	17.0	
Lowest			5.0	
Totals				0.0

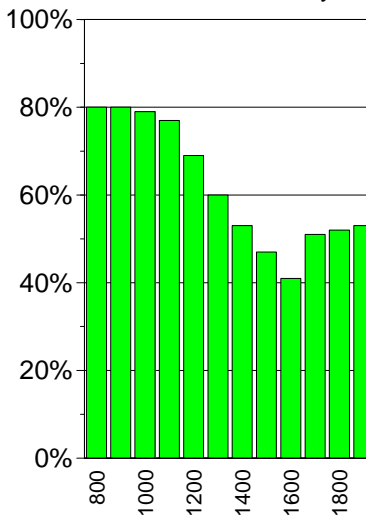
Mean Wind & Max Gust (mph)



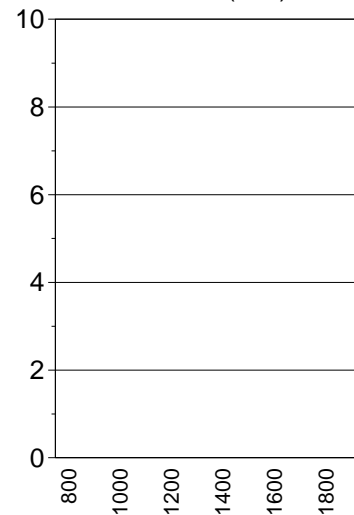
Temperature (°C)



Relative Humidity



Rainfall (mm)



Weather for the Working Day at SAMPLE

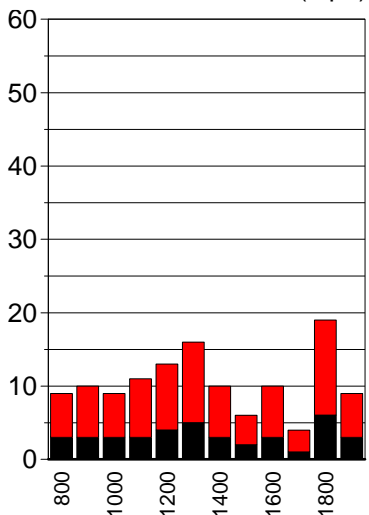
Thursday 29 March 2007

4:13 PM
13/06/2007

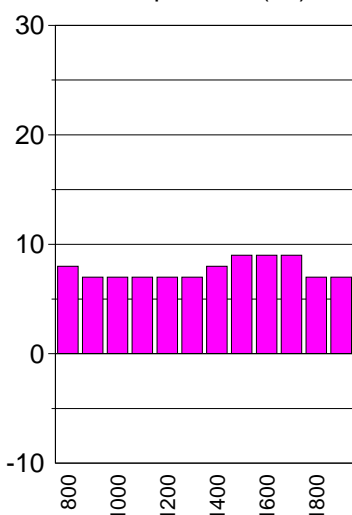
Hour Ending GMT	Wind Dirn	10 Minute Mean Wind @10m (mph)	Max Gust @10m (mph)	Air Temp (°C)	Relative Humidity	Rain (mm)	Sun (hours)	State of Ground	Significant Weather
0800	270°	6.0	9.0	8.0	83%	0.0		N/A	N/A
0900	270°	7.0	10.0	7.0	82%	0.0		N/A	N/A
1000	315°	6.0	9.0	7.0	85%	0.2		N/A	N/A
1100	270°	8.0	11.0	7.0	85%	0.3		N/A	N/A
1200	315°	9.0	13.0	7.0	80%	0.0		N/A	N/A
1300	270°	11.0	16.0	7.0	80%	0.0		N/A	N/A
1400	270°	7.0	10.0	8.0	81%	0.0		N/A	N/A
1500	270°	4.0	6.0	9.0	75%	0.0		N/A	N/A
1600	270°	7.0	10.0	9.0	70%	0.3		N/A	N/A
1700	315°	3.0	4.0	9.0	67%	0.0		N/A	N/A
1800	270°	13.0	19.0	7.0	69%	0.0		N/A	N/A
1900	270°	6.0	9.0	7.0	61%	0.0		N/A	N/A

Highest	13.0	19.0	9.0		
Lowest			7.0		
Totals				0.8	

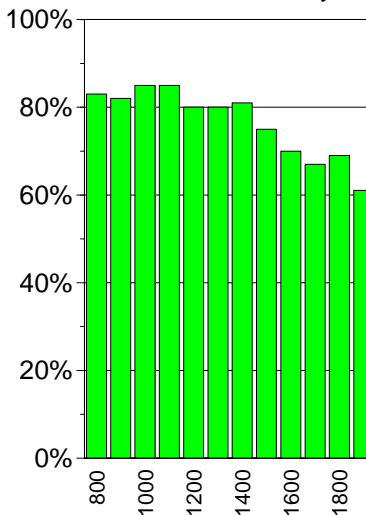
Mean Wind & Max Gust (mph)



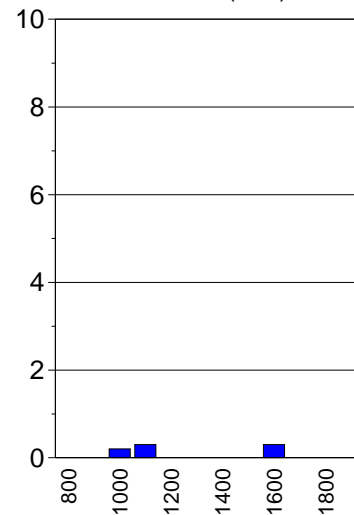
Temperature (°C)



Relative Humidity



Rainfall (mm)



Weather for the Working Day at SAMPLE

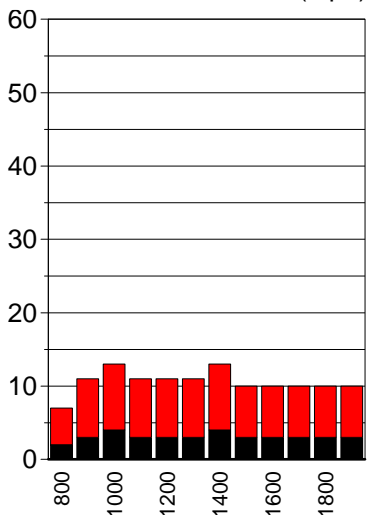
Friday 30 March 2007

4:13 PM
13/06/2007

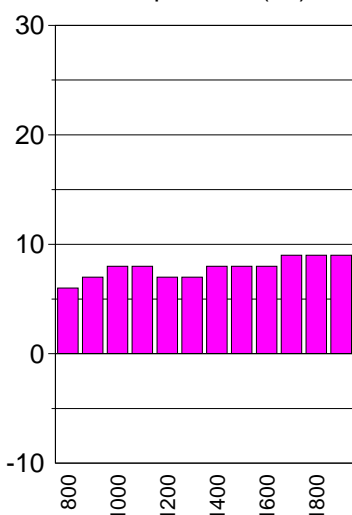
Hour Ending GMT	Wind Dirn	10 Minute Mean Wind @10m (mph)	Max Gust @10m (mph)	Air Temp (°C)	Relative Humidity	Rain (mm)	Sun (hours)	State of Ground	Significant Weather
0800	45°	5.0	7.0	6.0	91%	0.0		N/A	N/A
0900	45°	8.0	11.0	7.0	90%	0.0		N/A	N/A
1000	45°	9.0	13.0	8.0	86%	0.1		N/A	N/A
1100	45°	8.0	11.0	8.0	83%	0.3		N/A	N/A
1200	CALM	8.0	11.0	7.0	87%	0.3		N/A	N/A
1300	CALM	8.0	11.0	7.0	90%	0.1		N/A	N/A
1400	45°	9.0	13.0	8.0	89%	0.3		N/A	N/A
1500	CALM	7.0	10.0	8.0	87%	0.0		N/A	N/A
1600	45°	7.0	10.0	8.0	92%	0.2		N/A	N/A
1700	45°	7.0	10.0	9.0	85%	0.7		N/A	N/A
1800	45°	7.0	10.0	9.0	81%	0.4		N/A	N/A
1900	45°	7.0	10.0	9.0	84%	0.1		N/A	N/A

Highest	9.0	13.0	9.0
Lowest			6.0
Totals			2.5

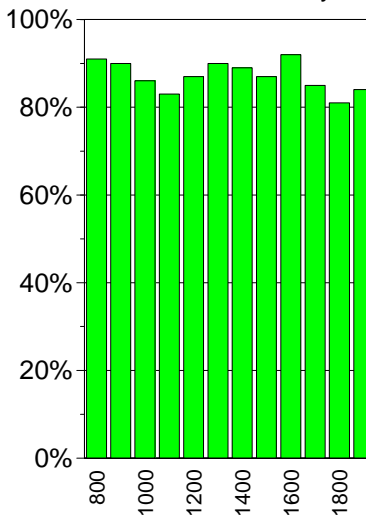
Mean Wind & Max Gust (mph)



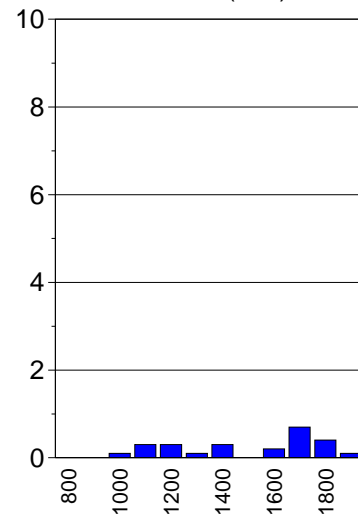
Temperature (°C)



Relative Humidity



Rainfall (mm)



Weather for the Working Day at SAMPLE

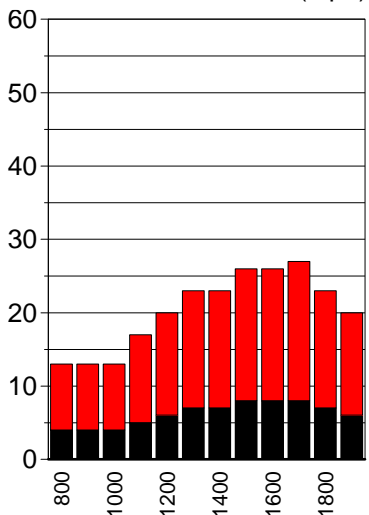
Saturday 31 March 2007

4:13 PM
13/06/2007

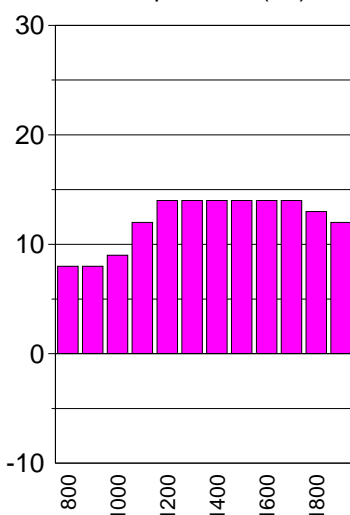
Hour Ending GMT	Wind Dirn	10 Minute Mean Wind @10m (mph)	Max Gust @10m (mph)	Air Temp (°C)	Relative Humidity	Rain (mm)	Sun (hours)	State of Ground	Significant Weather
0800	CALM	9.0	13.0	8.0	88%	0.0		N/A	N/A
0900	45°	9.0	13.0	8.0	87%	0.0		N/A	N/A
1000	45°	9.0	13.0	9.0	85%	0.0		N/A	N/A
1100	45°	12.0	17.0	12.0	77%	0.0		N/A	N/A
1200	45°	14.0	20.0	14.0	62%	0.0		N/A	N/A
1300	45°	16.0	23.0	14.0	46%	0.0		N/A	N/A
1400	45°	16.0	23.0	14.0	41%	0.0		N/A	N/A
1500	45°	18.0	26.0	14.0	39%	0.0		N/A	N/A
1600	45°	18.0	26.0	14.0	38%	0.0		N/A	N/A
1700	45°	19.0	27.0	14.0	35%	0.0		N/A	N/A
1800	45°	16.0	23.0	13.0	31%	0.0		N/A	N/A
1900	45°	14.0	20.0	12.0	34%	0.0		N/A	N/A

Highest	19.0	27.0	14.0		
Lowest			8.0		
Totals				0.0	

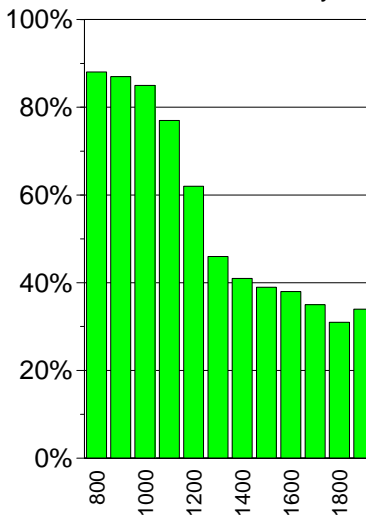
Mean Wind & Max Gust (mph)



Temperature (°C)



Relative Humidity



Rainfall (mm)

