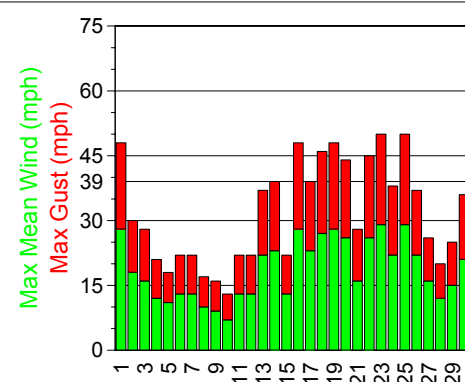
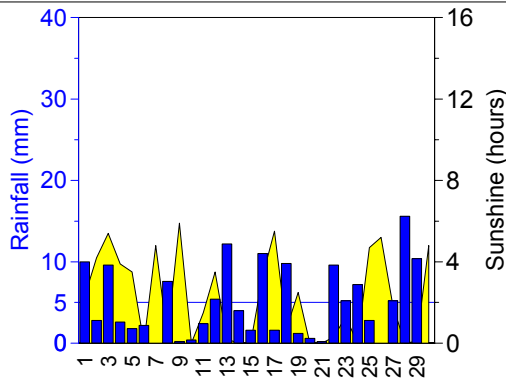
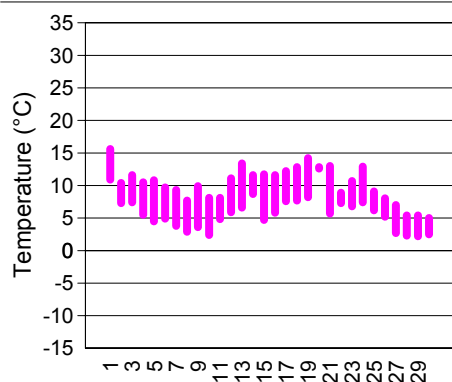


Weather at SAMPLE (County)

November 2009

Wednesday 31 March 2010

Date	Humidity at 0900	---Temperature---			Sun (hours)	Rain (mm)	----Maximum Wind----			Snow Depth (cm)	Significant Weather
		Max (°C)	Min (°C)	Mean (°C)			Mean (mph)	Gust (mph)	Dirn		
Sun 01st	97%	15.6	10.9	13.3	2.3	10.0	28	48	WSW	0.0	5.2mm rain in hour commencing 0900; Severe gale force gusts
Mon 02nd	84%	10.4	7.3	8.9	4.2	2.8	18	30	WSW	0.0	None
Tue 03rd	94%	11.6	7.4	9.5	5.4	9.6	16	28	W	0.0	None
Wed 04th	94%	10.5	5.5	8.0	3.9	2.6	12	21	WSW	0.0	None
Thu 05th	84%	10.8	4.5	7.7	3.5	1.8	11	18	W	0.0	None
Fri 06th	96%	9.7	4.9	7.3	0.0	2.2	13	22	W	0.0	None
Sat 07th	86%	9.3	3.8	6.6	4.8	0.0	13	22	WSW	0.0	None
Sun 08th	95%	7.7	2.9	5.3	0.3	7.6	10	17	NNW	0.0	Ground frost (-1.8°C); 4.6mm rain in hour commencing 1200
Mon 09th	97%	9.9	3.6	6.8	5.9	0.2	9	16	NW	0.0	Ground frost (-0.6°C)
Tue 10th	93%	8.1	2.4	5.3	0.0	0.4	7	13	WSW	0.0	Ground frost (-2.9°C)
Wed 11th	95%	8.1	4.8	6.5	1.5	2.4	13	22	SE	0.0	None
Thu 12th	93%	11.1	5.9	8.5	3.5	5.4	13	22	SSW	0.0	None
Fri 13th	93%	13.4	6.6	10.0	0.2	12.2	22	37	SSW	0.0	4mm rain in hour commencing 1900
Sat 14th	75%	11.6	8.7	10.2	0.0	4.0	23	39	WNW	0.0	Gale force gusts
Sun 15th	92%	11.7	4.7	8.2	0.0	1.6	13	22	SW	0.0	None
Mon 16th	97%	11.6	5.8	8.7	3.3	11.0	28	48	WSW	0.0	5mm rain in hour commencing 0700; Severe gale force gusts
Tue 17th	78%	12.2	7.6	9.9	5.5	1.6	23	39	WSW	0.0	Gale force gusts
Wed 18th	90%	12.8	7.7	10.3	0.7	9.8	27	46	SW	0.0	Gale force gusts
Thu 19th	74%	14.2	8.2	11.2	2.5	1.2	28	48	SSW	0.0	Severe gale force gusts
Fri 20th	79%	12.8	12.6	12.7	0.0	0.6	26	44	SW	0.0	Gale force gusts
Sat 21st	98%	13.0	5.7	9.4	0.0	0.2	16	28	S	0.0	None
Sun 22nd	84%	8.9	7.3	8.1	0.3	9.6	26	45	WSW	0.0	Gale force gusts
Mon 23rd	78%	10.7	6.8	8.8	1.3	5.2	29	50	WSW	0.0	Severe gale force gusts
Tue 24th	96%	12.9	7.4	10.2	0.0	7.2	22	38	SSW	0.0	None
Wed 25th	79%	9.1	6.2	7.7	4.7	2.8	29	50	SW	0.0	Severe gale force gusts
Thu 26th	82%	8.0	5.2	6.6	5.2	0.0	22	37	SW	0.0	None
Fri 27th	86%	7.0	2.7	4.9	1.8	5.2	16	26	W	0.0	Ground frost (-2.1°C)
Sat 28th	96%	5.4	2.3	3.9	0.0	15.6	12	20	E	0.0	None
Sun 29th	98%	5.4	2.2	3.8	0.1	10.4	15	25	NNE	0.0	4.2mm rain in hour commencing 1100
Mon 30th	86%	5.0	2.5	3.8	4.8	0.0	21	36	NE	0.0	None



Comparison of November 2009 with normal	Actuals for Nov 2009	November 1999-2008			Anomalies for Nov 2009	Notes for November 2009
		Lowest	Average	Highest		
Average Max Temperature	10.3°C	8.9°C	10.1°C	11.2°C	0.2°C	Typical
Average Min Temperature	5.8°C	3.4°C	4.9°C	5.5°C	0.9°C	Warmer at night than any previous November 1999-2008
No. days with Min T < 0°C	0 days	0 days	2.5 days	9.0 days	-2.5 days	Fewer air frosts than 90% Novembers 1999-2008
Sunshine	65.7 hrs	36.6 hrs	66.2 hrs	107.3 hrs	99.2%	Typical
Rainfall	143.2mm	25.9mm	74.6mm	168.2mm	191.9%	Wetter than 90% Novembers 1999-2008
No. days Rain (>=0.2mm)	27 days	14.0 days	18.2 days	23.0 days	8.8 days	More days with rain than 100% Novembers 1999-2008
No. days Rain >5mm	13.0 days	1.0 days	4.0 days	10.0 days	9.0 days	More very wet days than any previous November 1999-2008
No. days Snow Lying	0.0 days	0.0 days	0.0 days	0.0 days	0.0 days	Typical
Average Max Gust	32 mph	24 mph	28 mph	31 mph	113.1%	Windier than any previous November 1999-2008
No. days Max Gust >=30mph	15 days	8.0 days	13.3 days	18.0 days	2 days	Typical